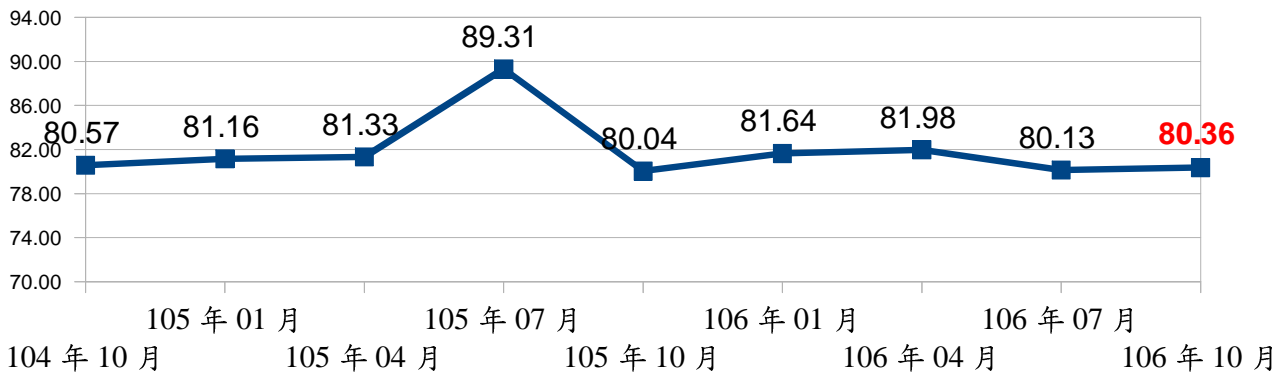


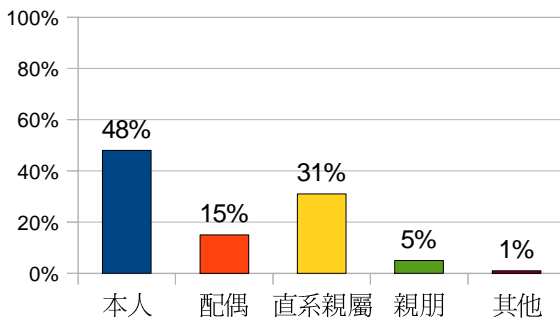
# 106年10月門診病患滿意度調查結果

104年10月至106年10月門診病患滿意度

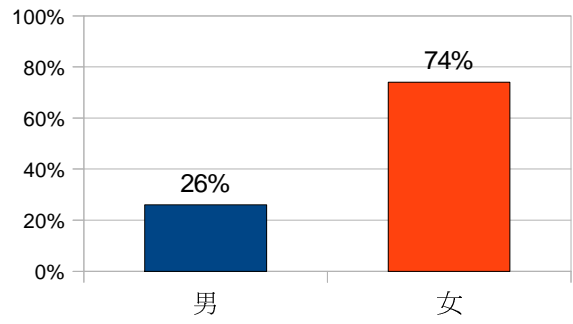


## ◎填表人基本資料

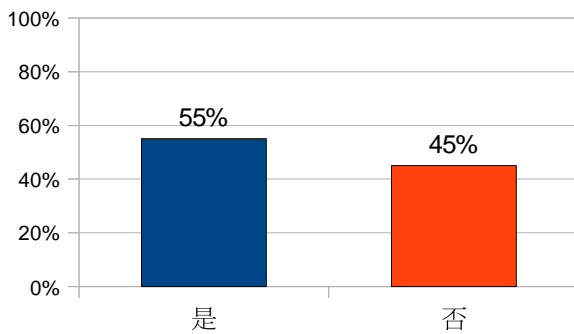
填表人



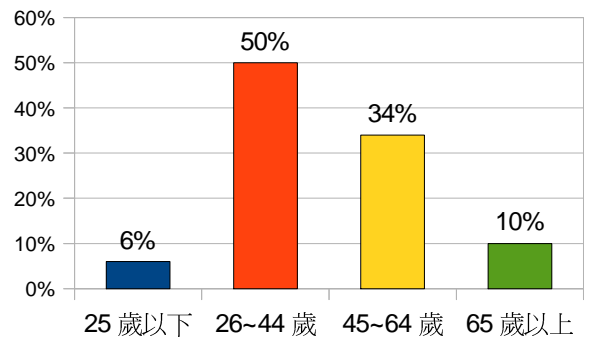
性別



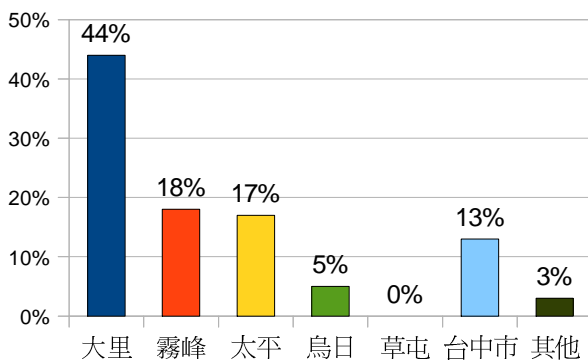
是否就醫決定者



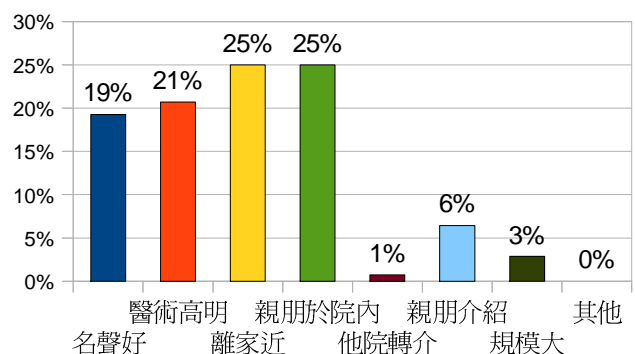
年齡



居住地

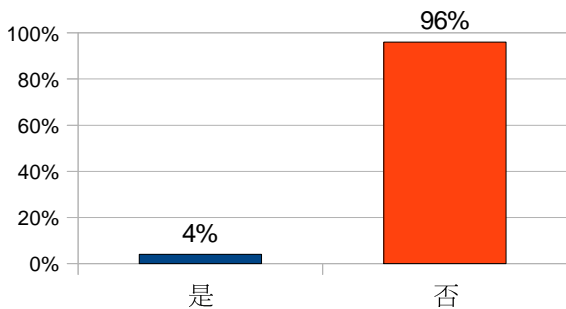


選擇本院原因

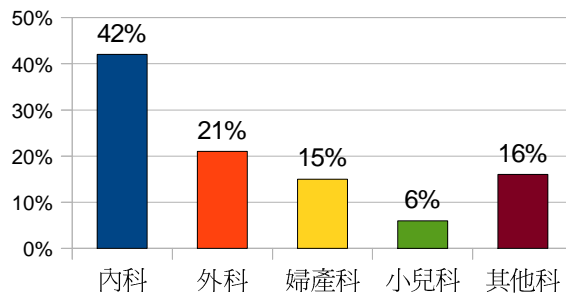


## ◎病患資料

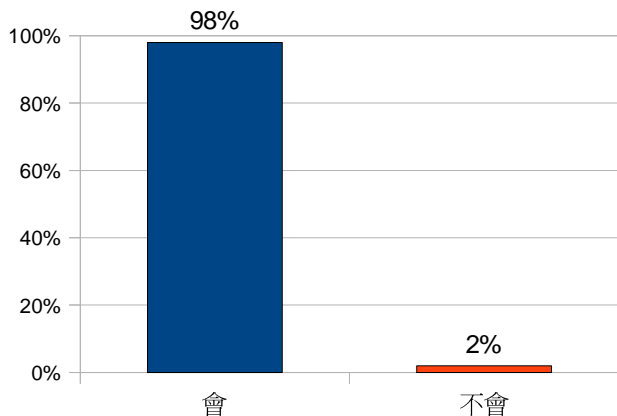
### 初次就醫



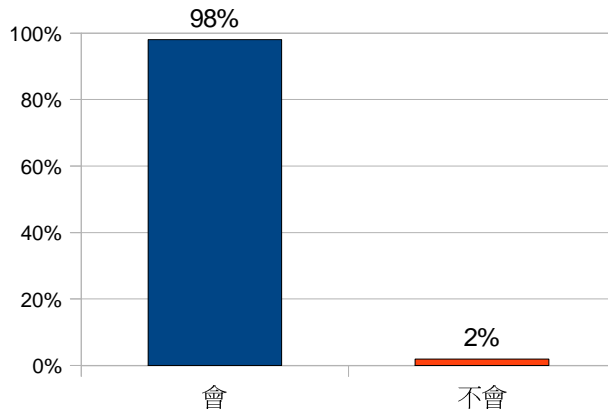
### 看診科別



### 介紹其他親友來本院就醫

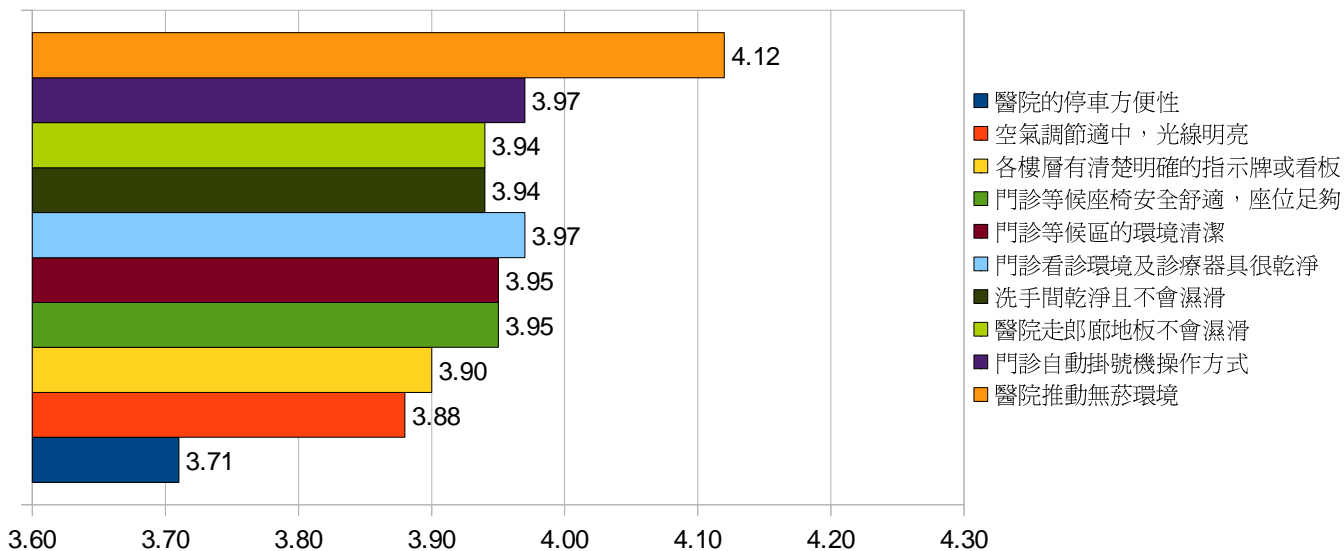


### 再來本院就醫

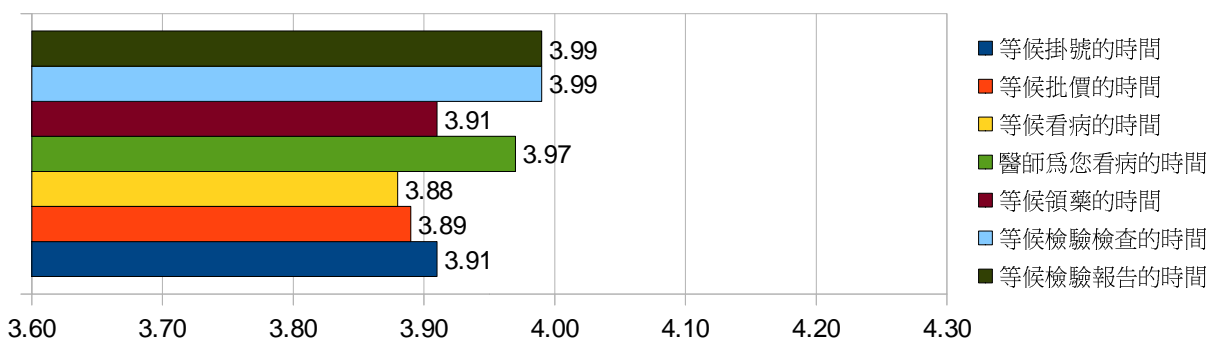


## ◎問卷內容結果統計

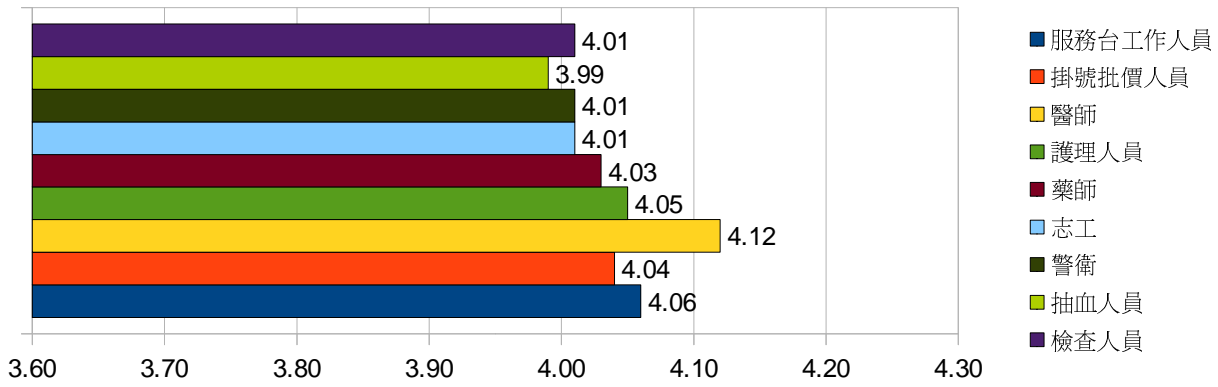
### 醫院環境設施



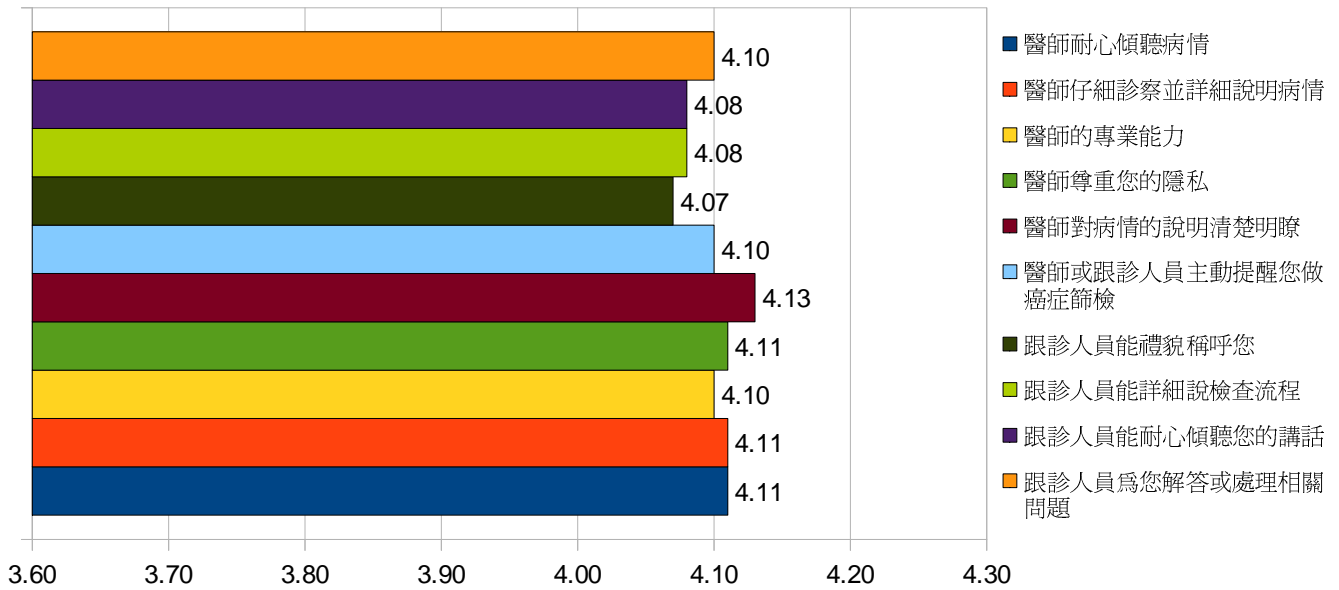
### 等候時間



## 工作人員服務態度



## 醫療過程



## 醫院病人安全

