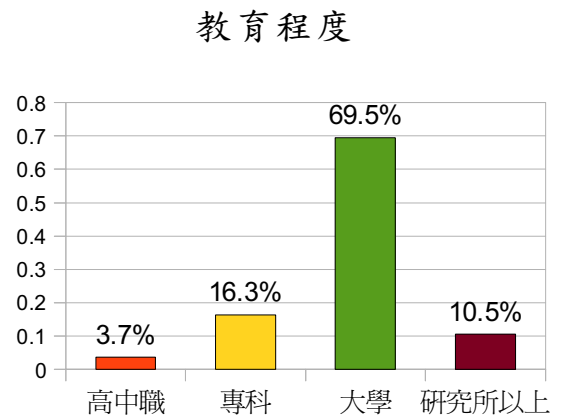
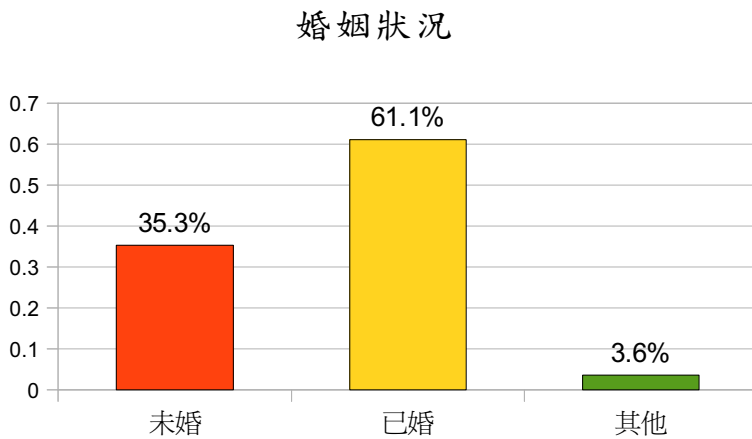
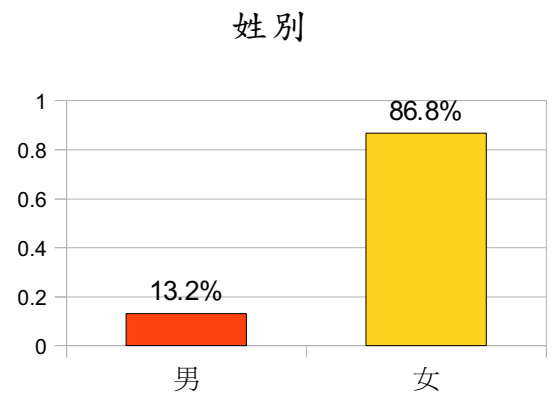
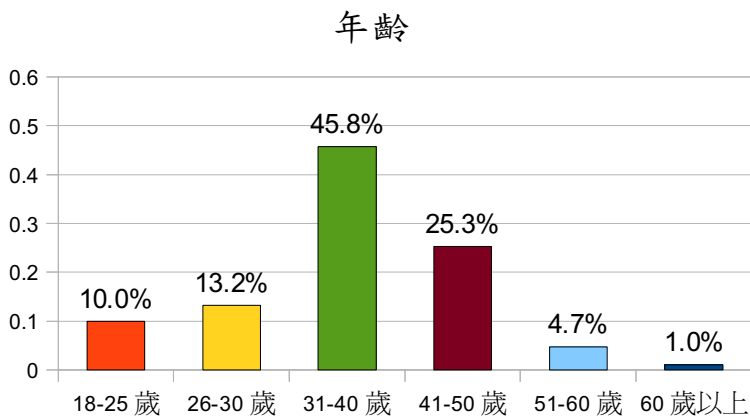
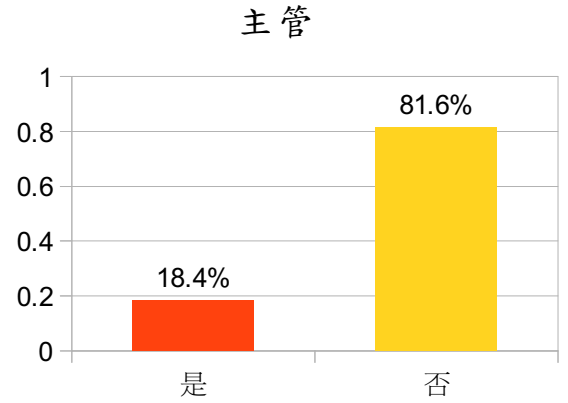
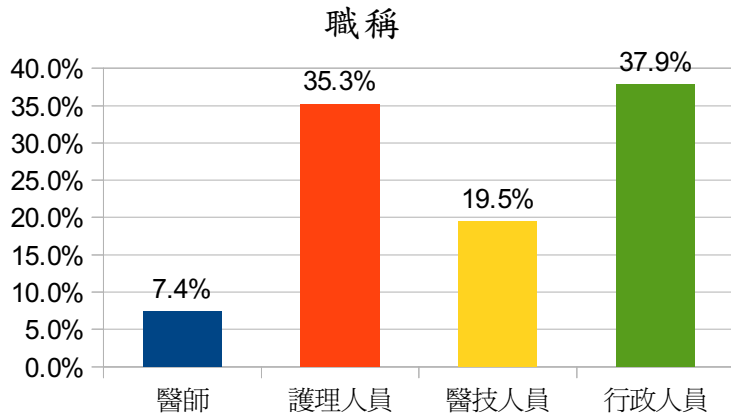
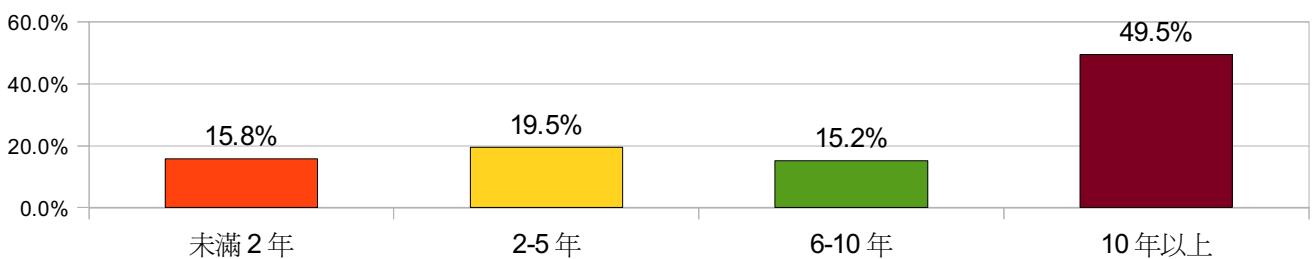


# 104年下半年度員工滿意度調查結果統計圖

## 一、基本資料

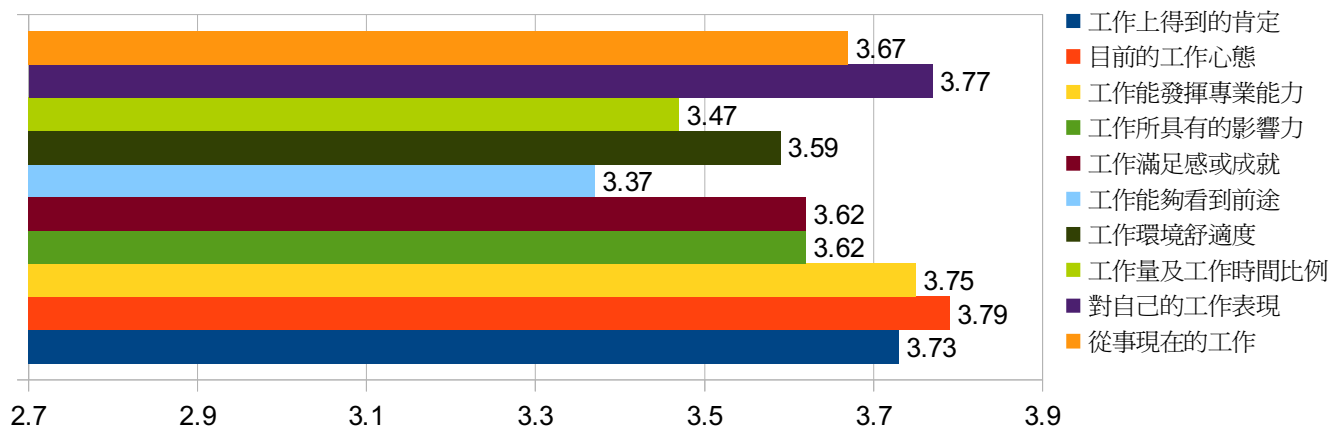


### 本院服務年資

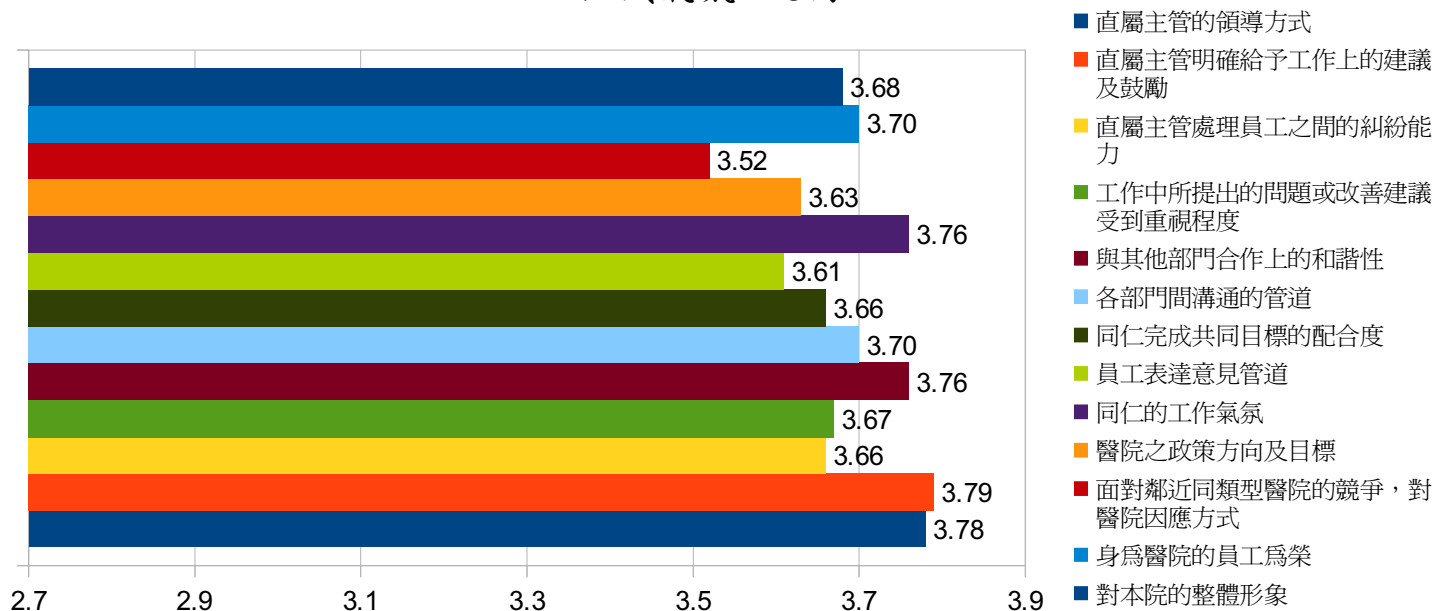


## 二、問卷內容

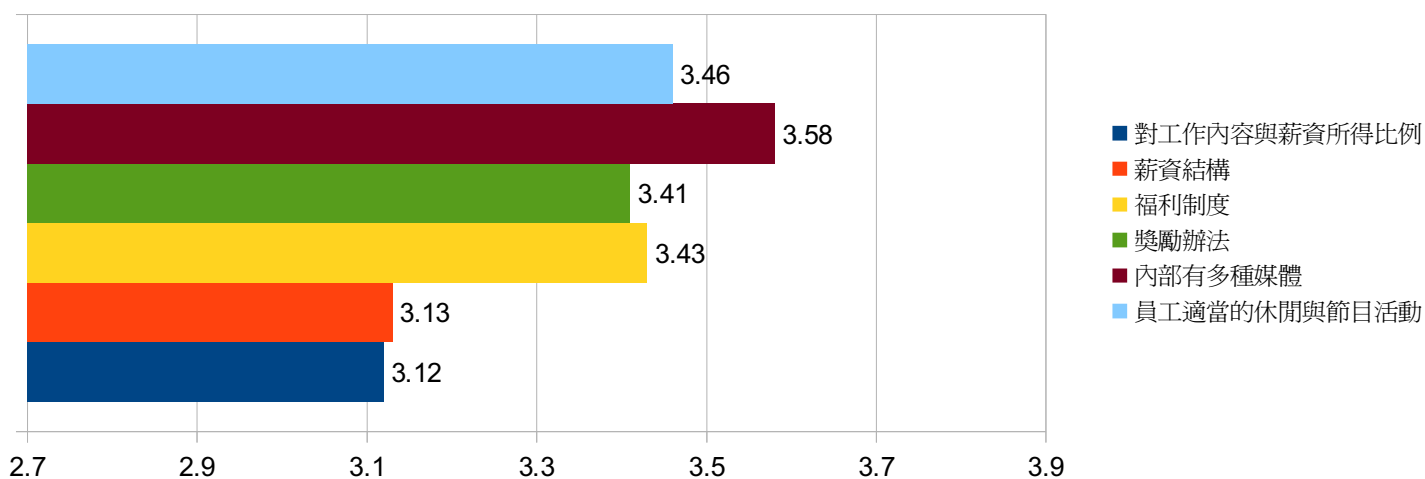
### 工作特性



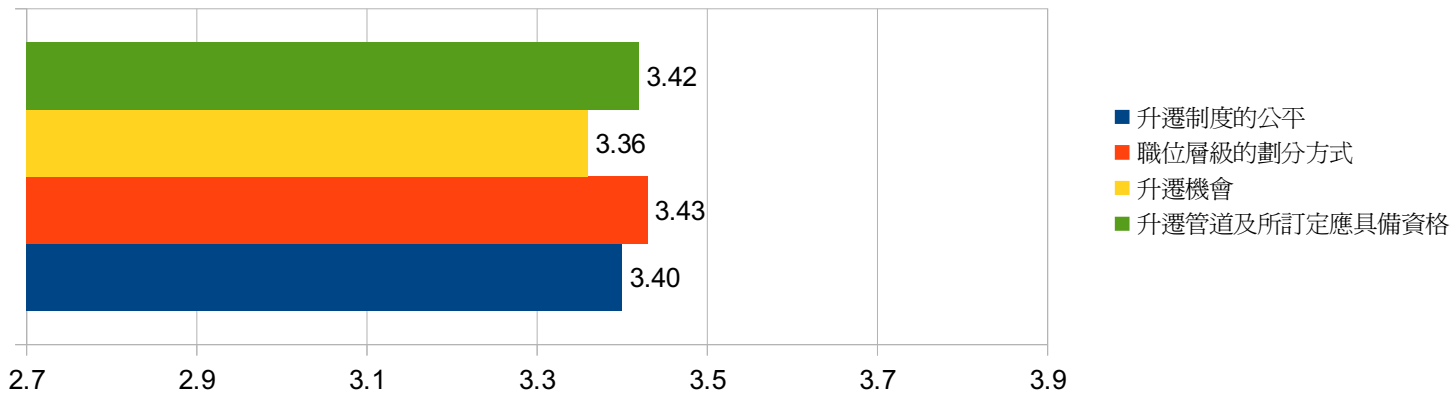
### 組織氣氛 . 認同



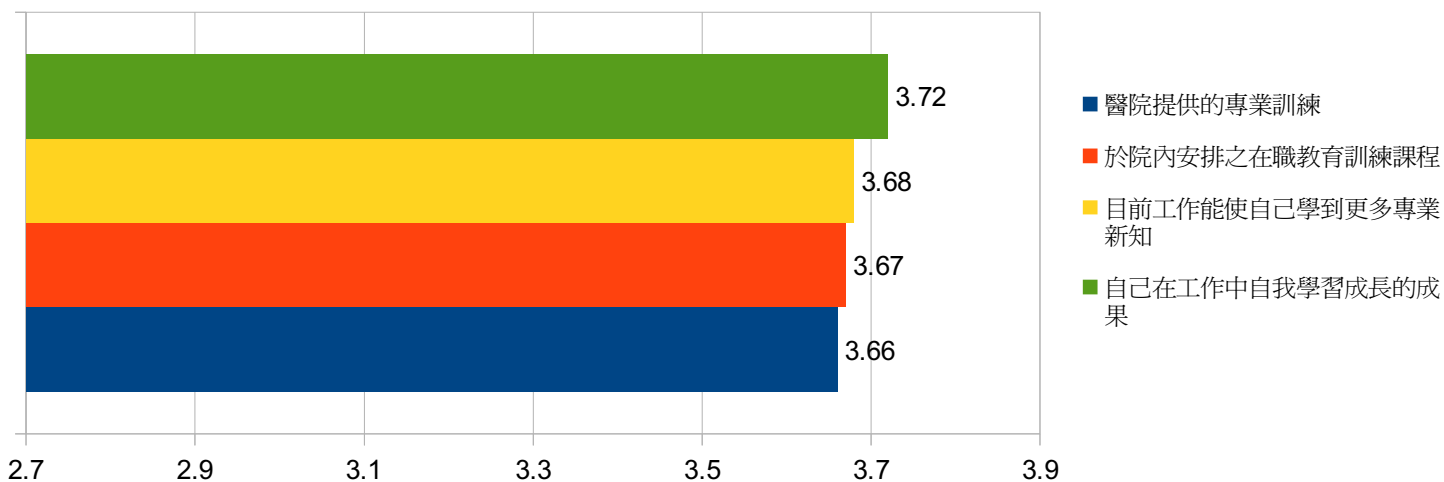
### 薪資福利



### 升遷制度

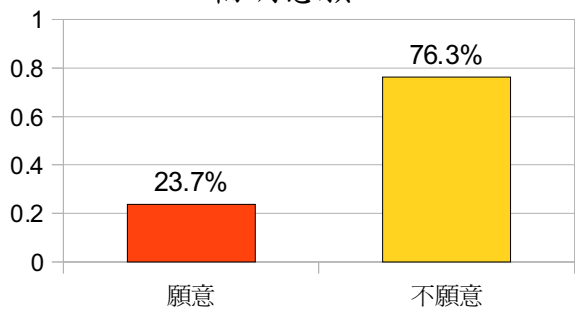


### 學習成長

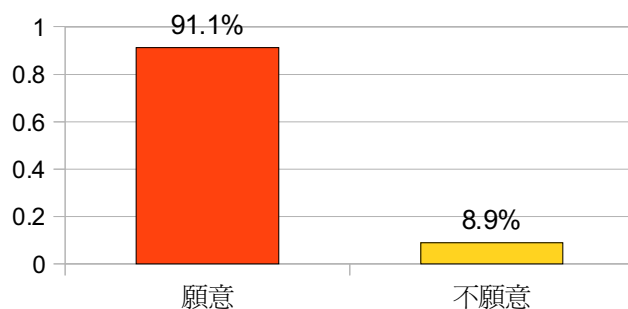


### 三、留任意願

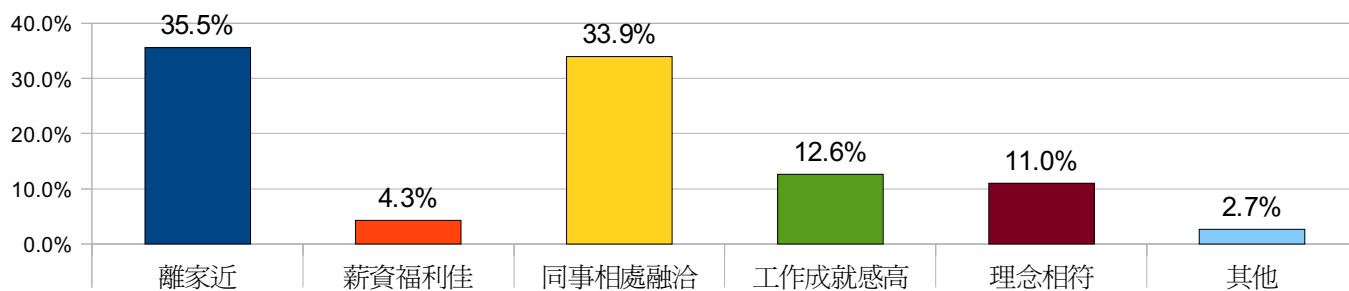
#### 輪調意願



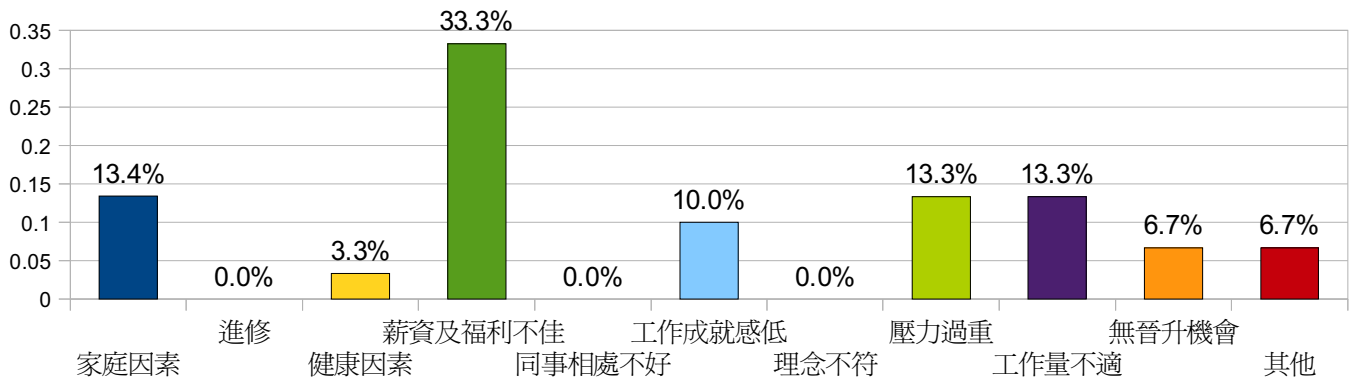
#### 留任意願



#### 願意續留本院原因

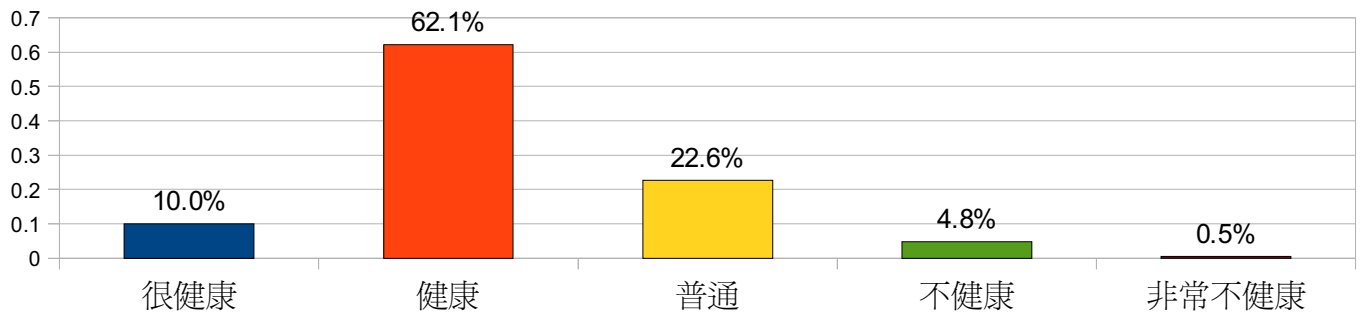


### 不續留本院原因

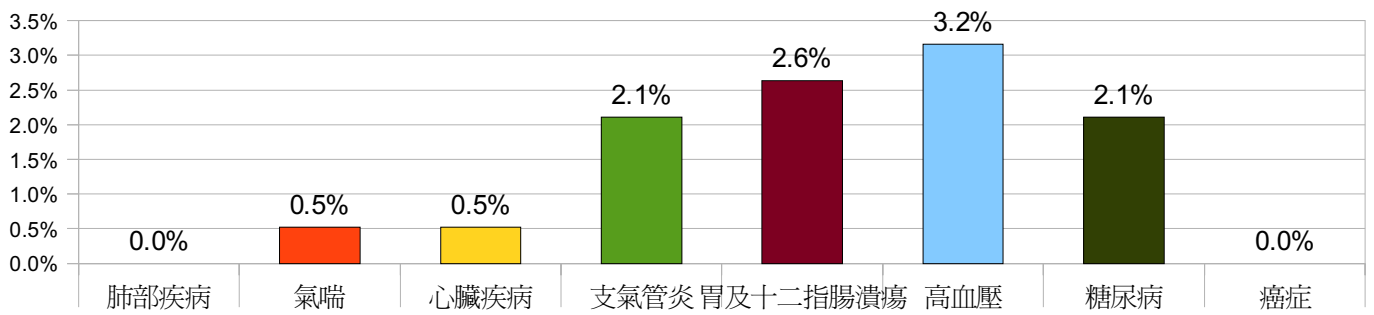


### 四、健康行為

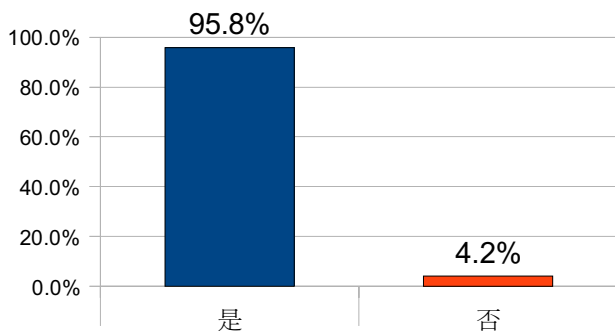
#### 自覺健康情形



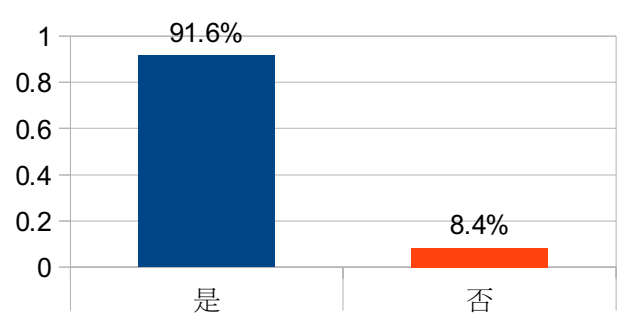
#### 去年一年間經醫師診斷或治療的慢性疾病



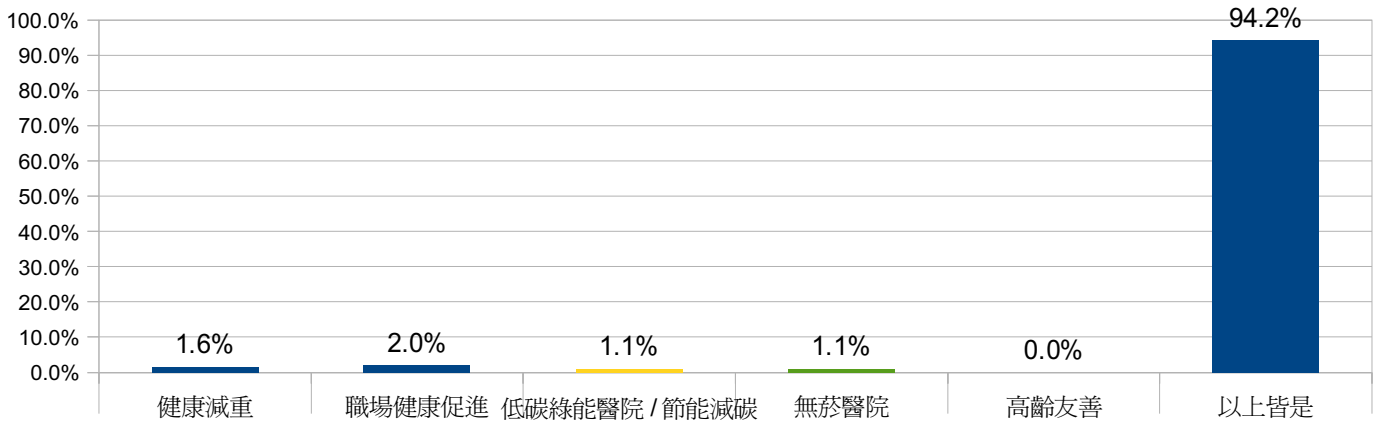
#### 您是否曉得本院已通過健康促進醫院認證



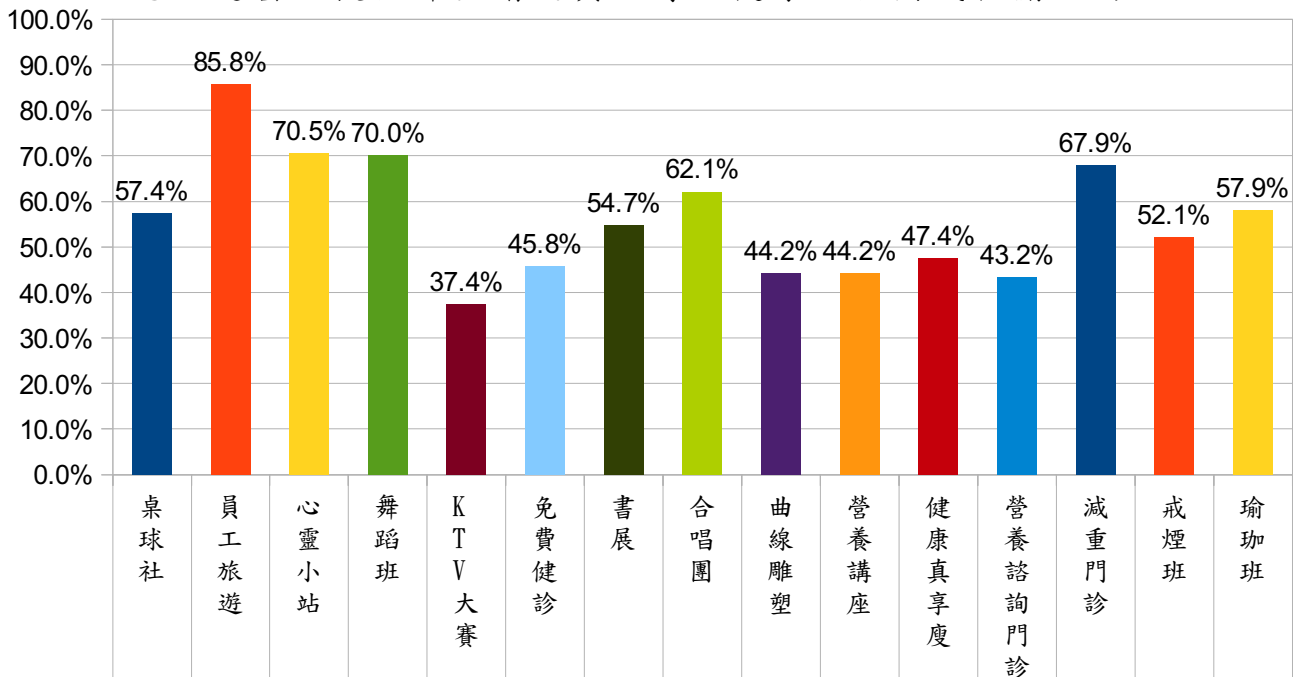
#### 您是否曉得本院已通過高齡友善照護機構認證



您知道以下何者為本院今年度針對員工(家屬)病人及社區民眾推行的健康促進政策重點

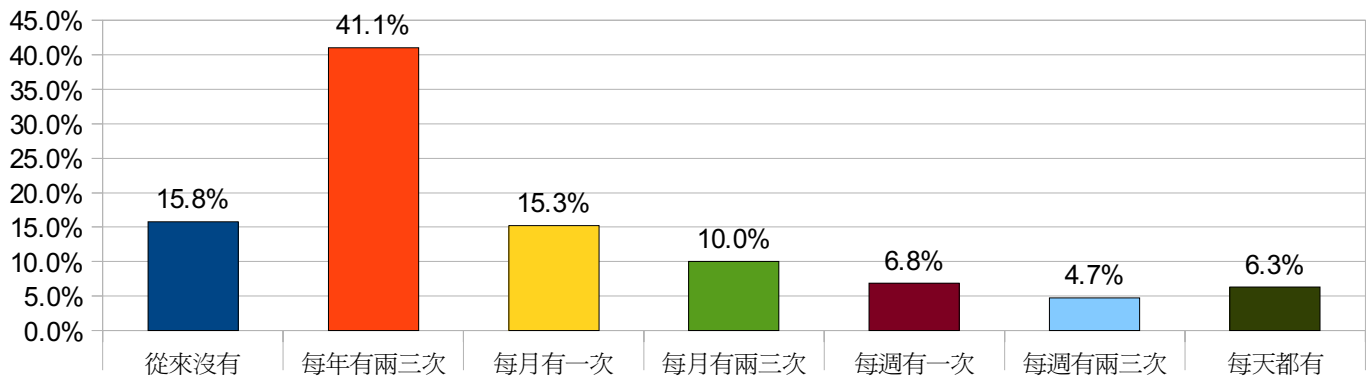


您知道醫院提供那些增進員工身心健康之社團或相關活動?



五、員工疲乏指數調查

我對目前的醫療工作感到心力交瘁



### 從事目前的工作後，我對人變得麻木冷酷

