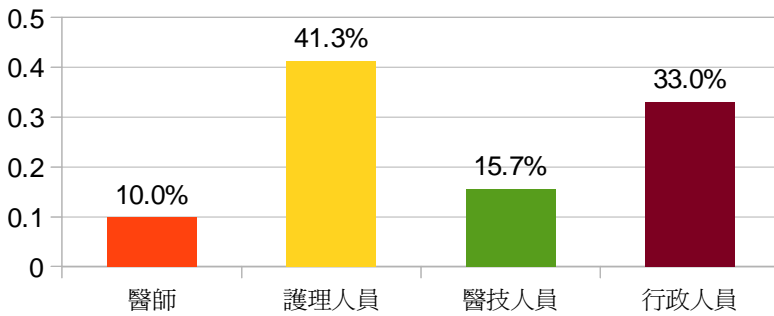


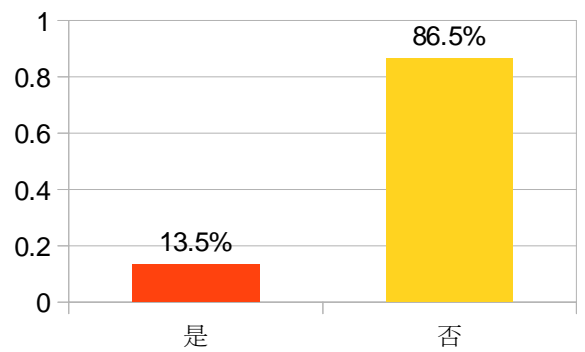
103年12月員工滿意度調查結果統計圖

一、基本資料

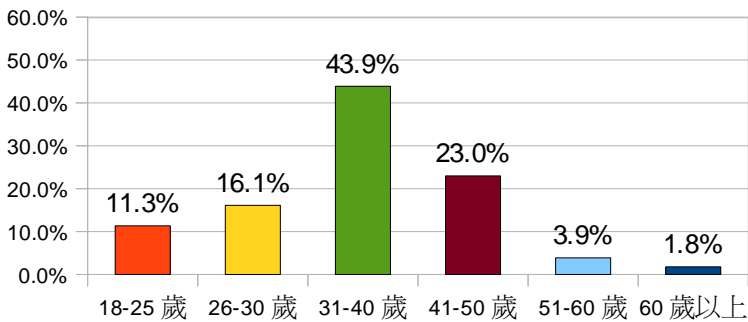
職稱



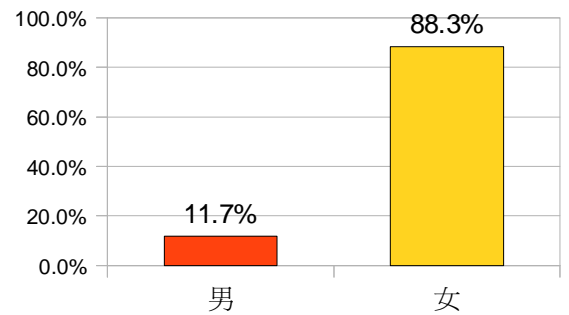
主管



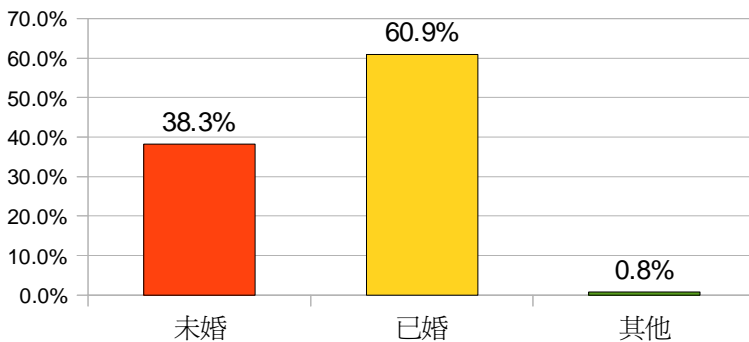
年齡



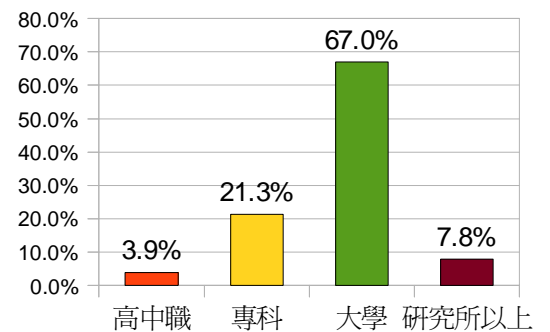
性別



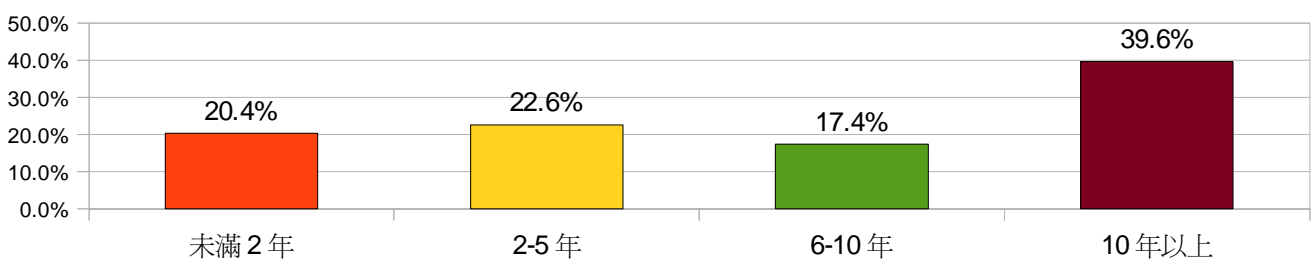
婚姻狀況



教育程度

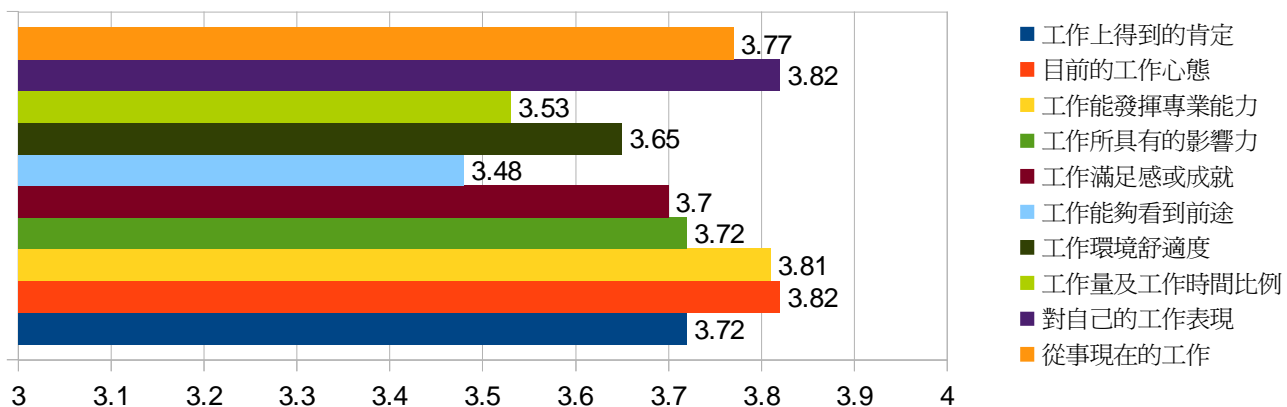


本院服務年資

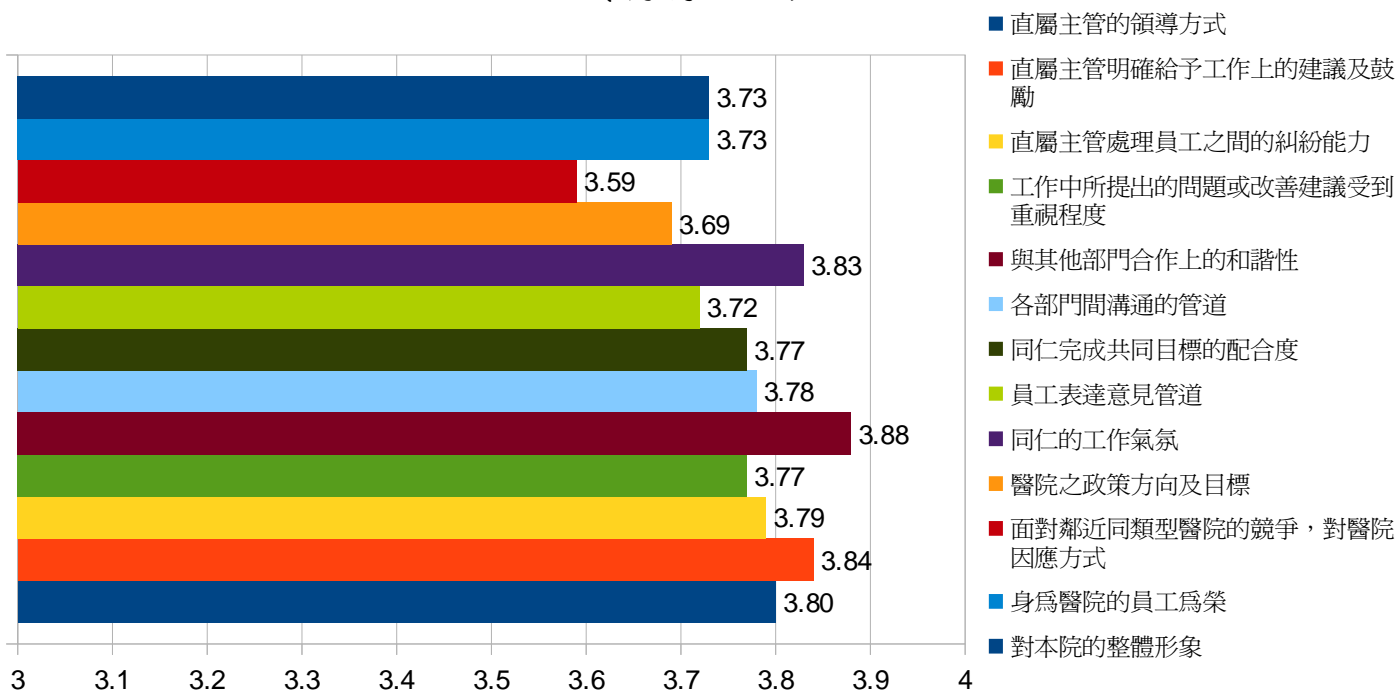


二、問卷內容

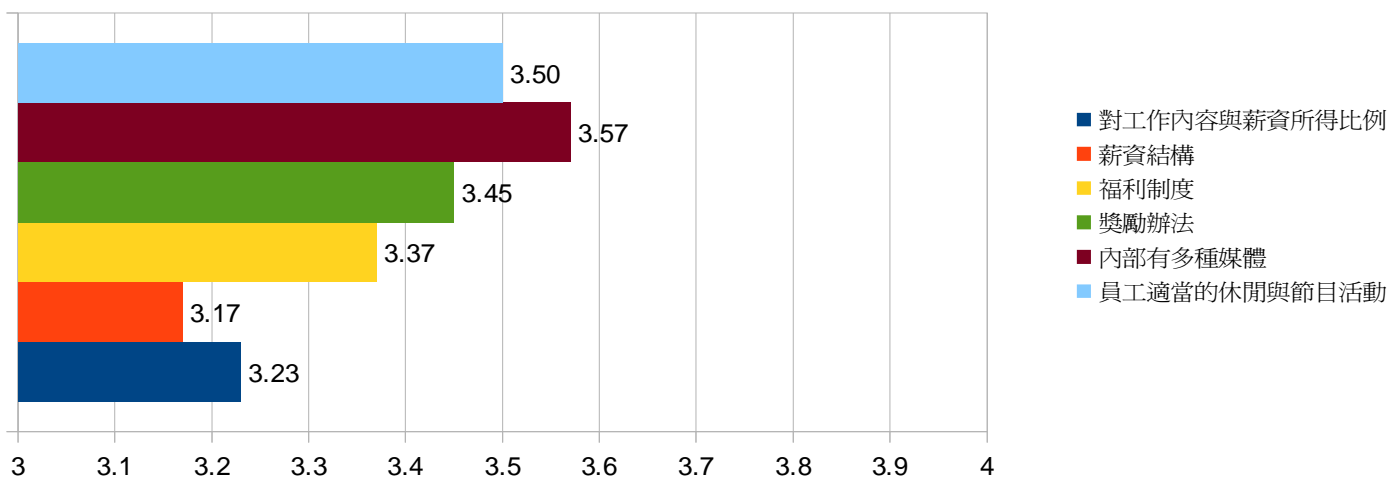
工作特性



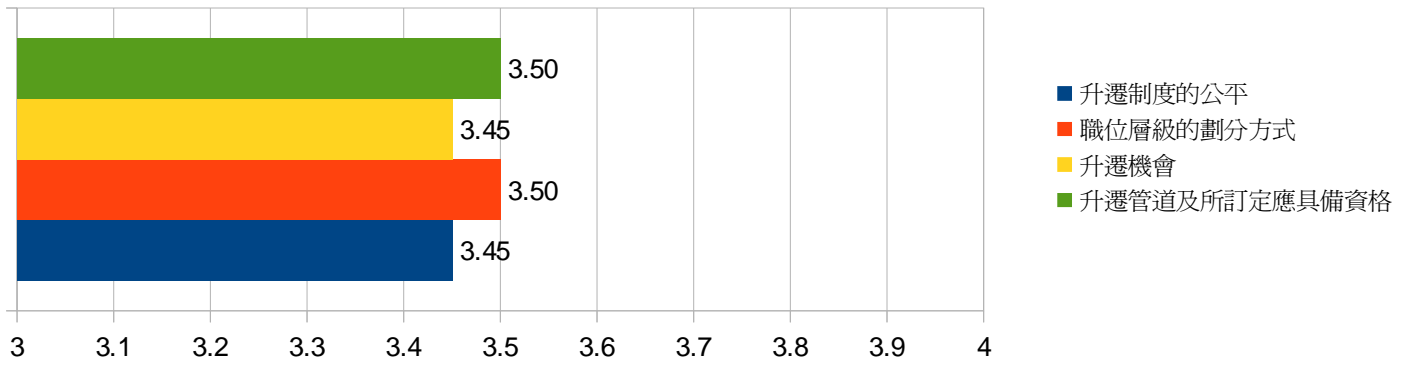
組織氣氛・認同



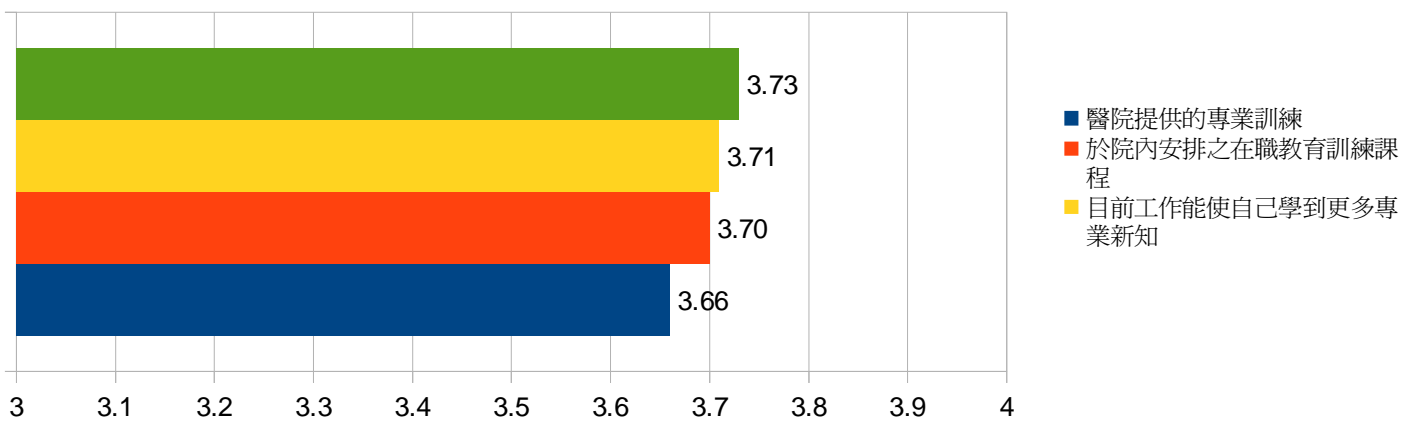
薪資福利



升遷制度

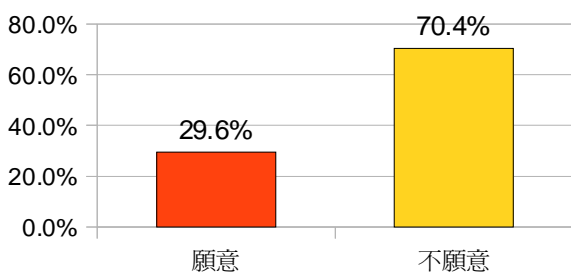


學習成長

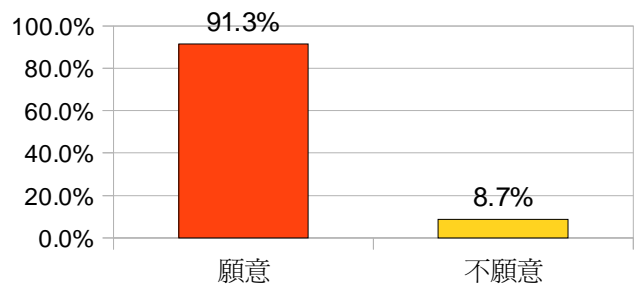


三、留任意願

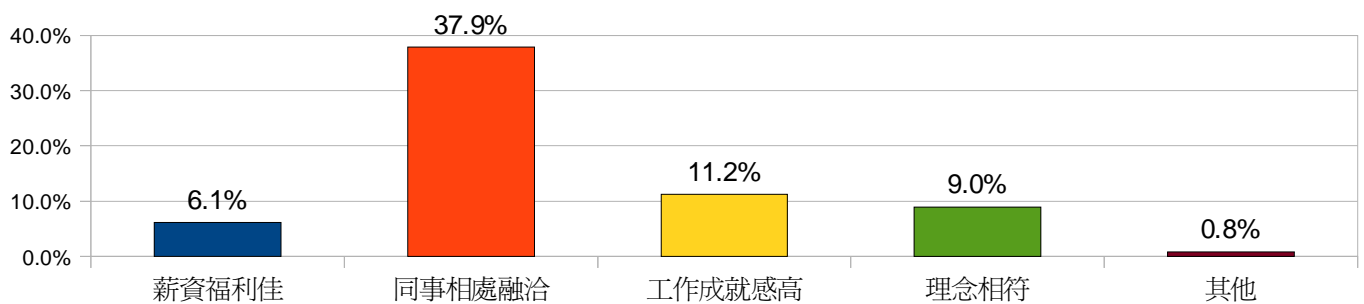
輪調意願



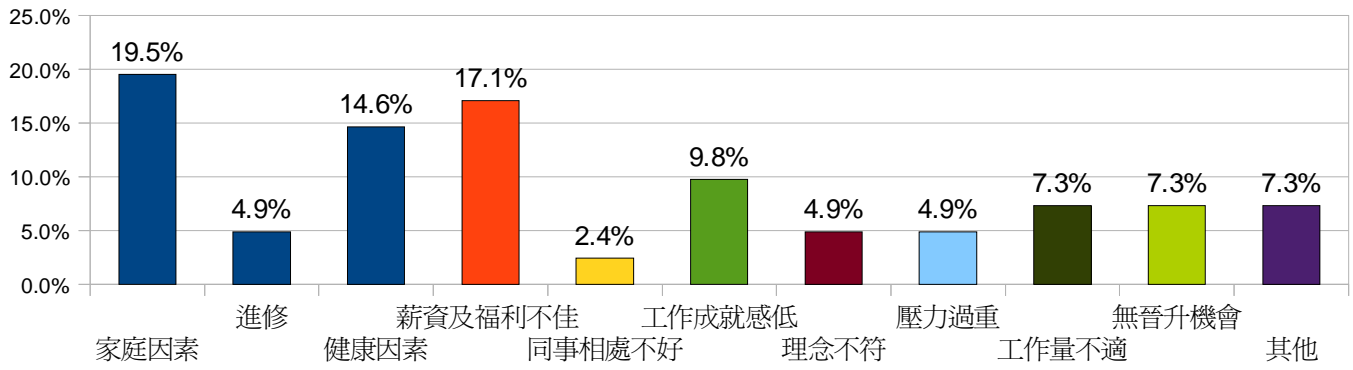
留任意願



願意續留本院原因

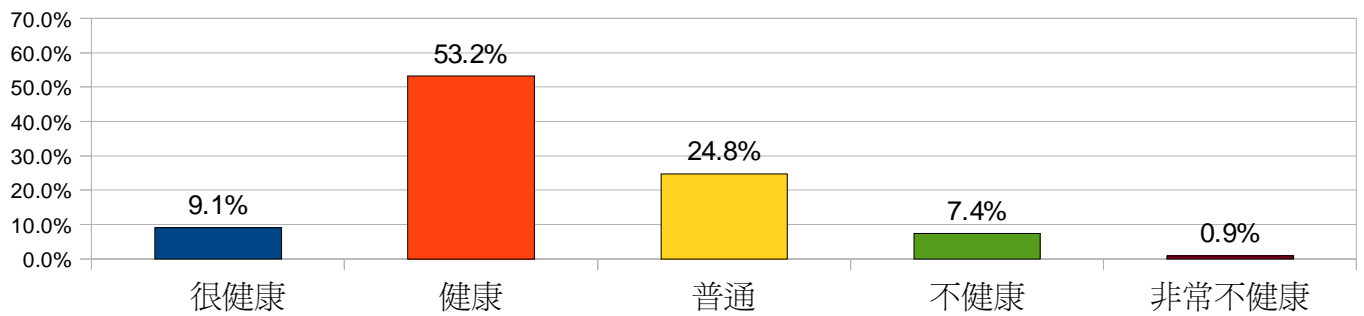


不續留本院原因

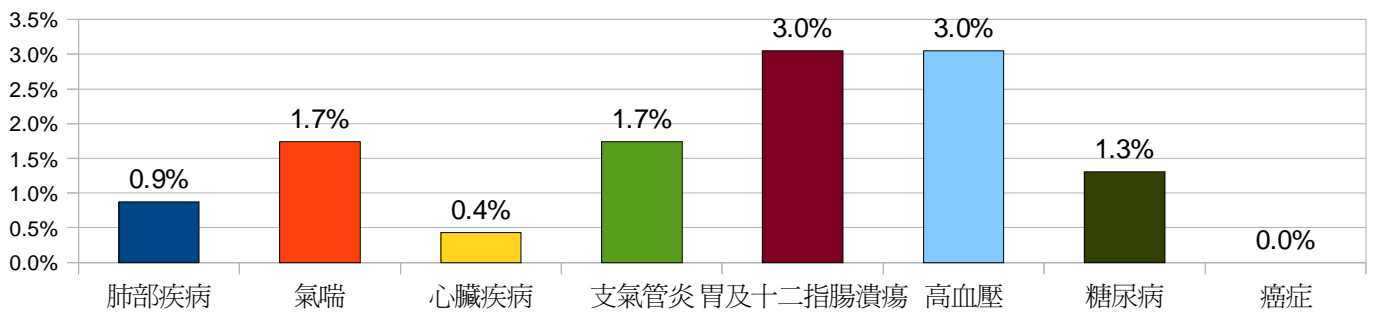


四、健康行為

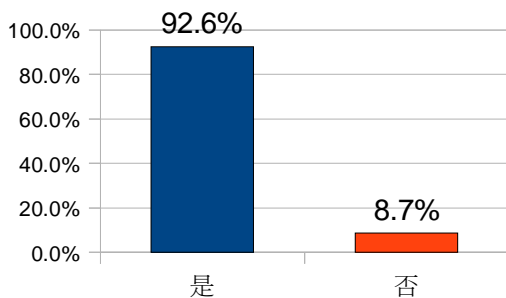
自覺健康情形



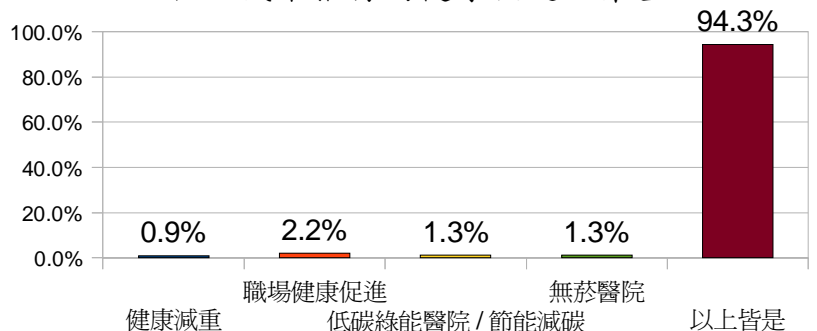
去年一年間經醫師診斷或治療的慢性疾病



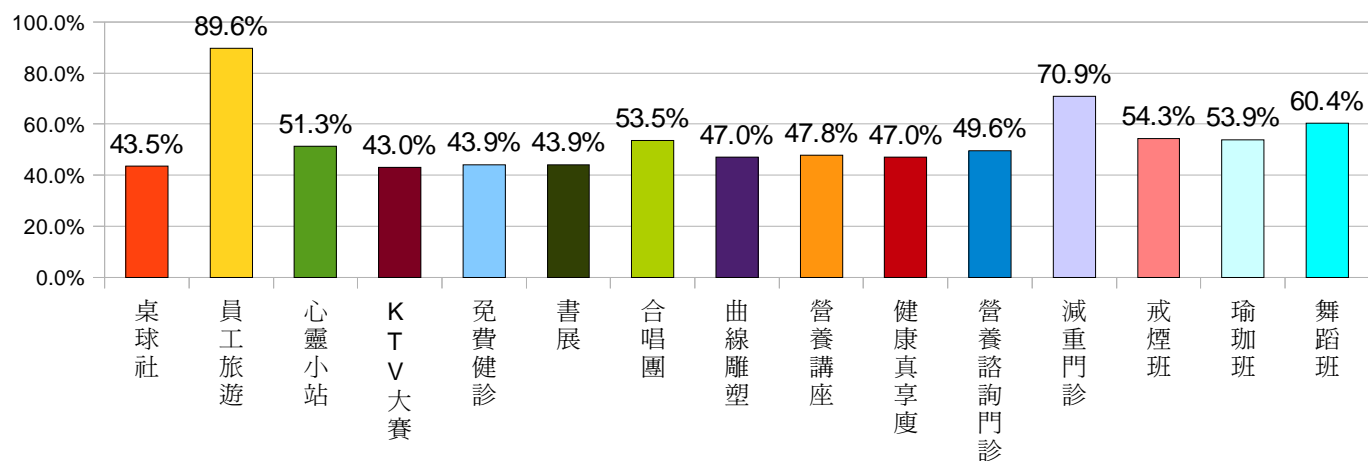
您是否曉得本院已通過健康促進醫院認證



您知道以下何者為本院今年度針對員工(家屬)病人及社區民眾推行的健康促進政策重點

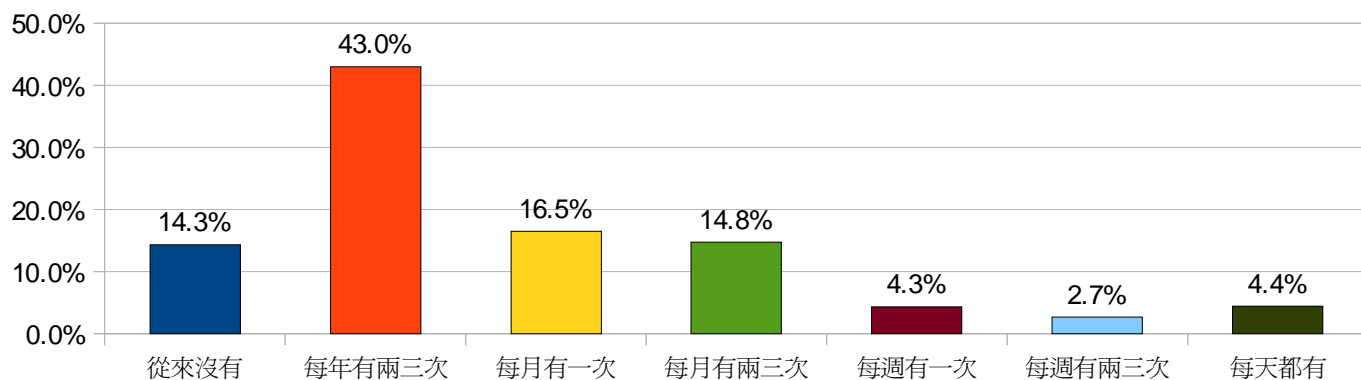


您知道醫院提供那些增進員工身心健康之社團或相關活動

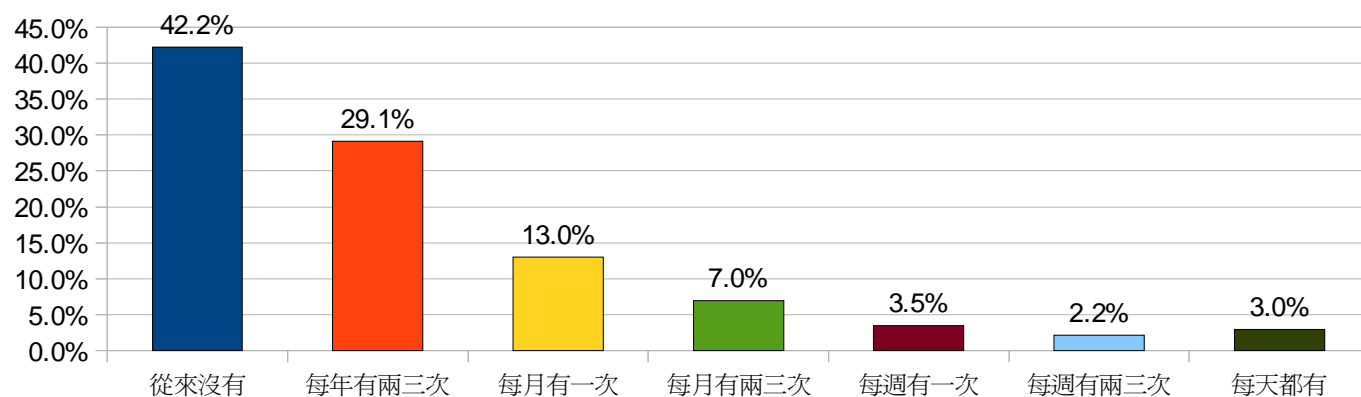


五、員工疲乏指數調查

我對目前的醫療工作感到心力交瘁



從事目前的工作後，我對人變得麻木冷酷



六、高齡友善醫院認知

請問您是否知道或聽過本院有在推動「高齡友善醫院」？

