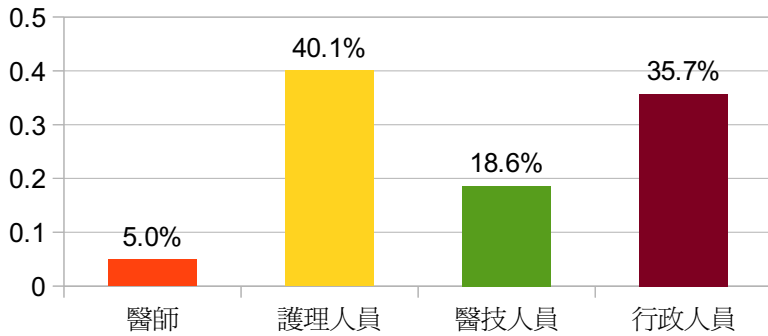


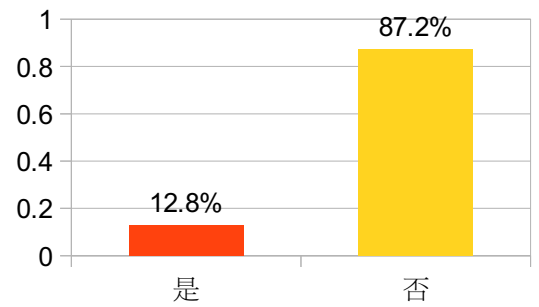
103年06月員工滿意度調查結果統計圖

一、基本資料

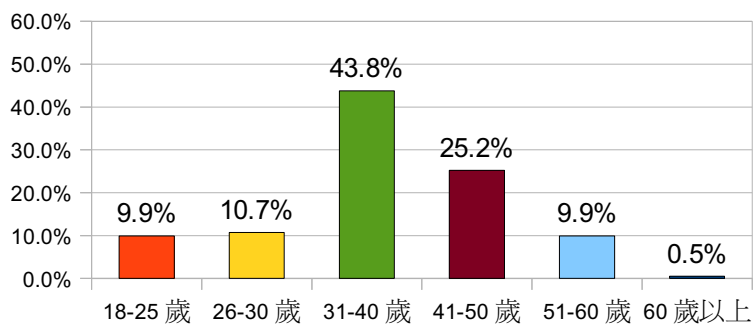
職稱



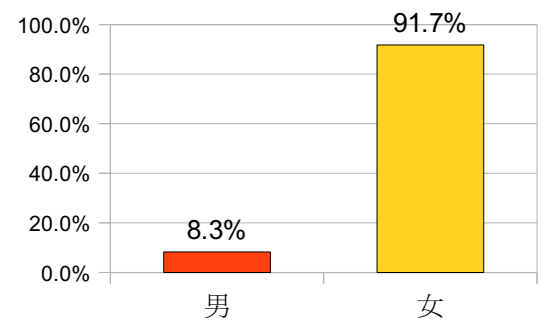
主管



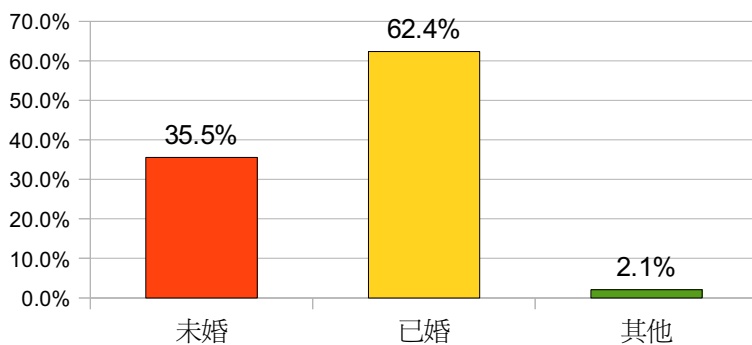
年齡



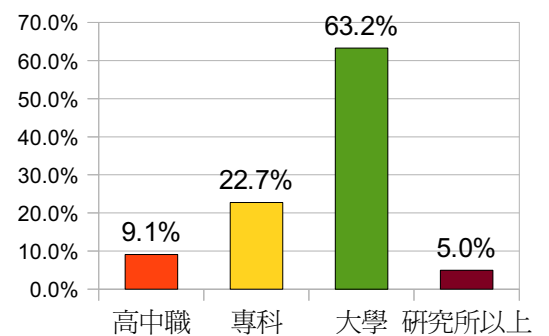
性別



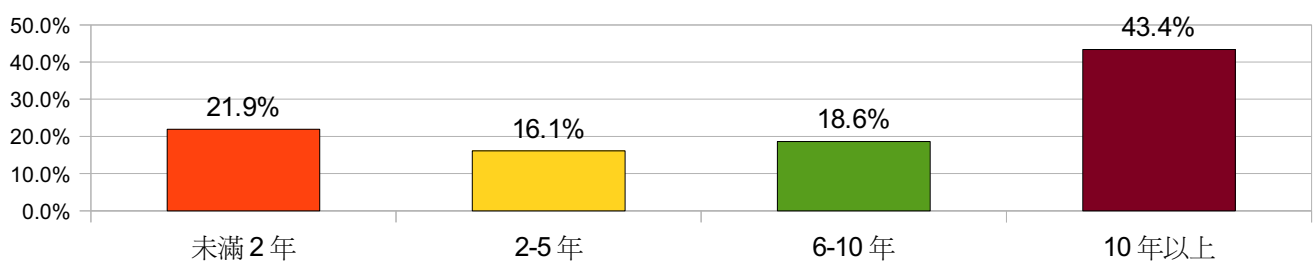
婚姻狀況



教育程度

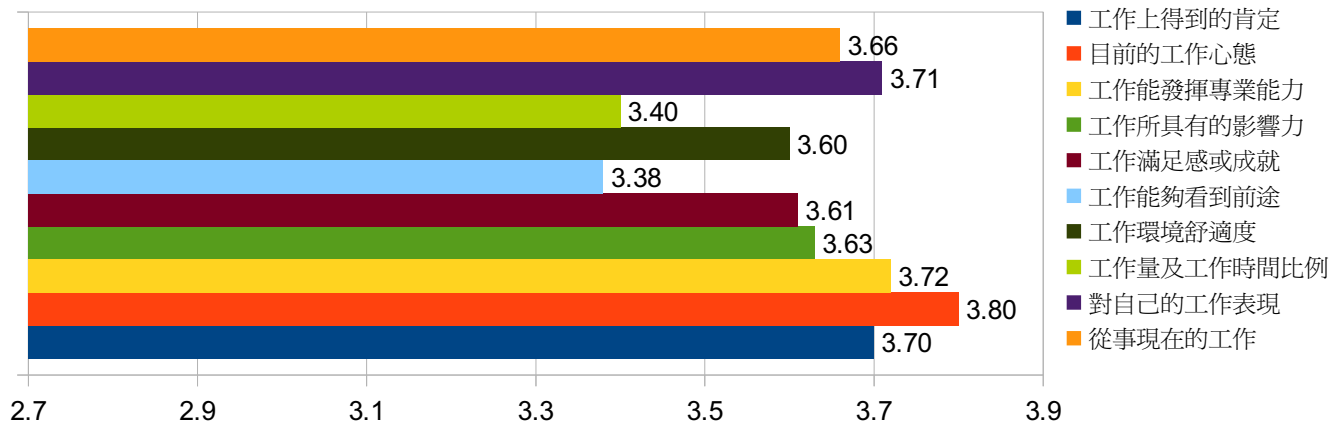


本院服務年資

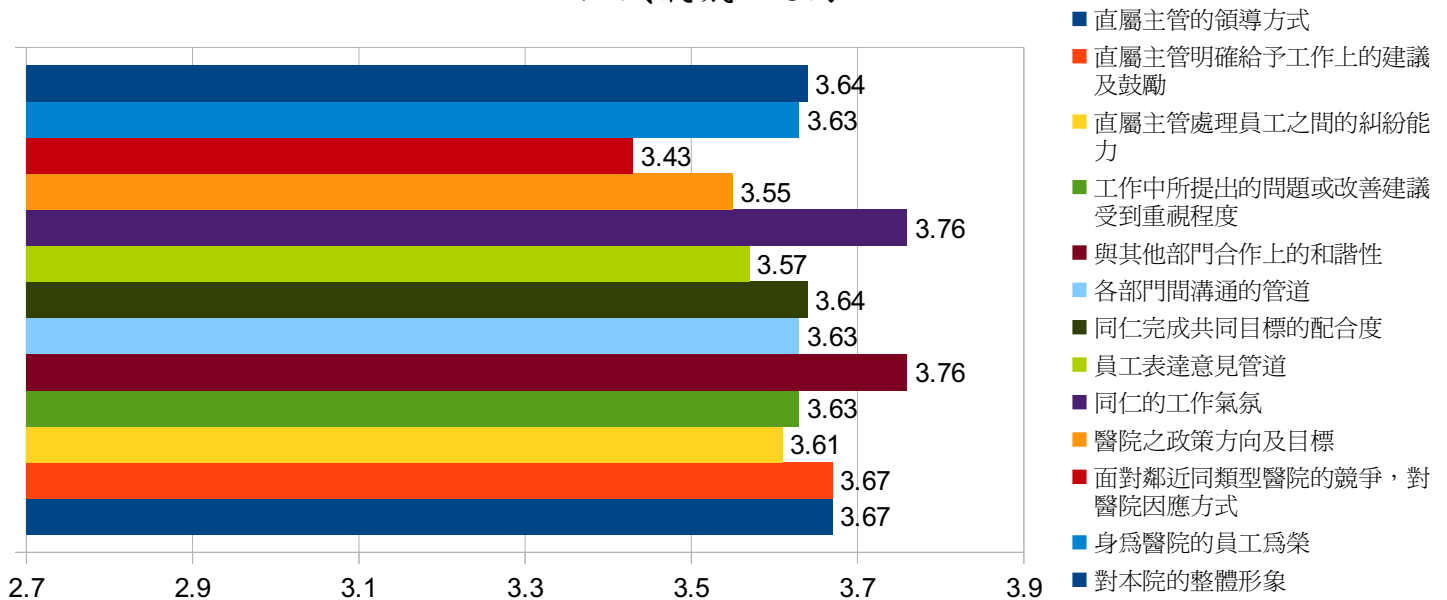


二、問卷內容

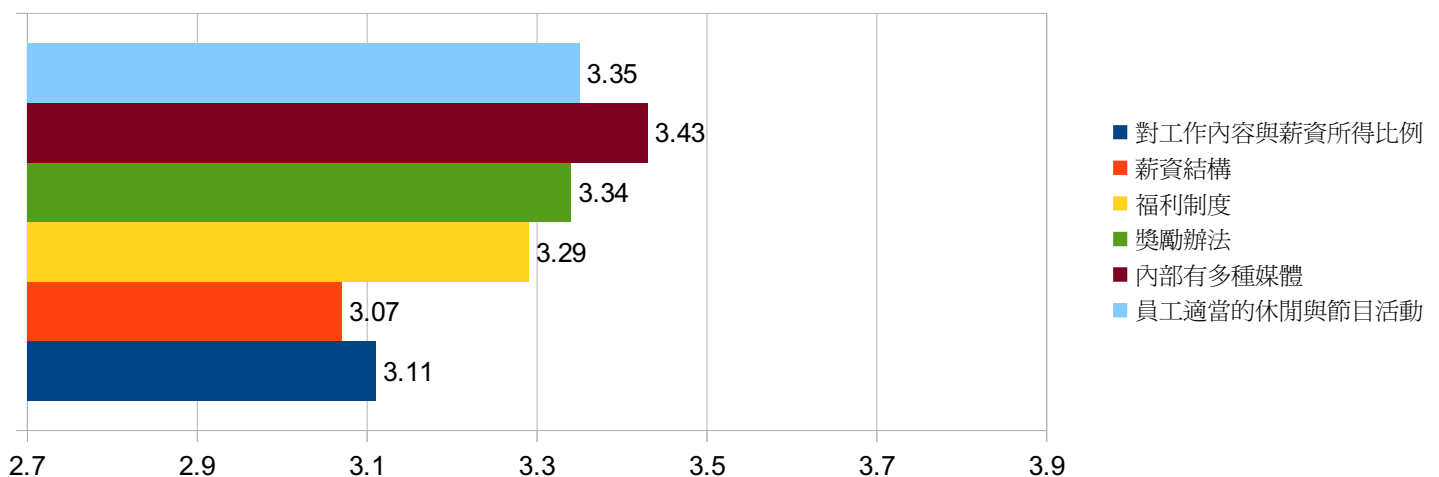
工作特性



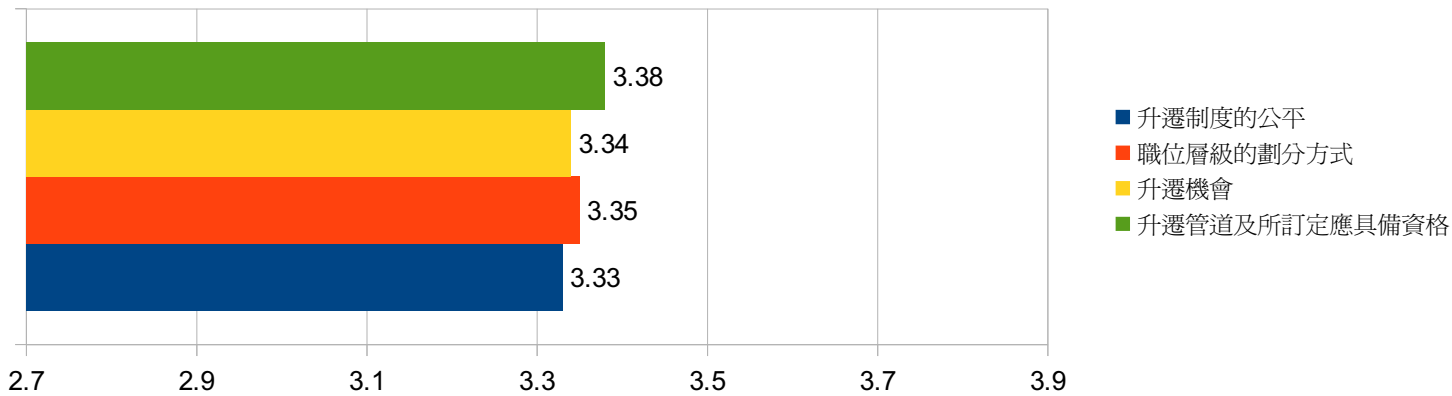
組織氣氛 . 認同



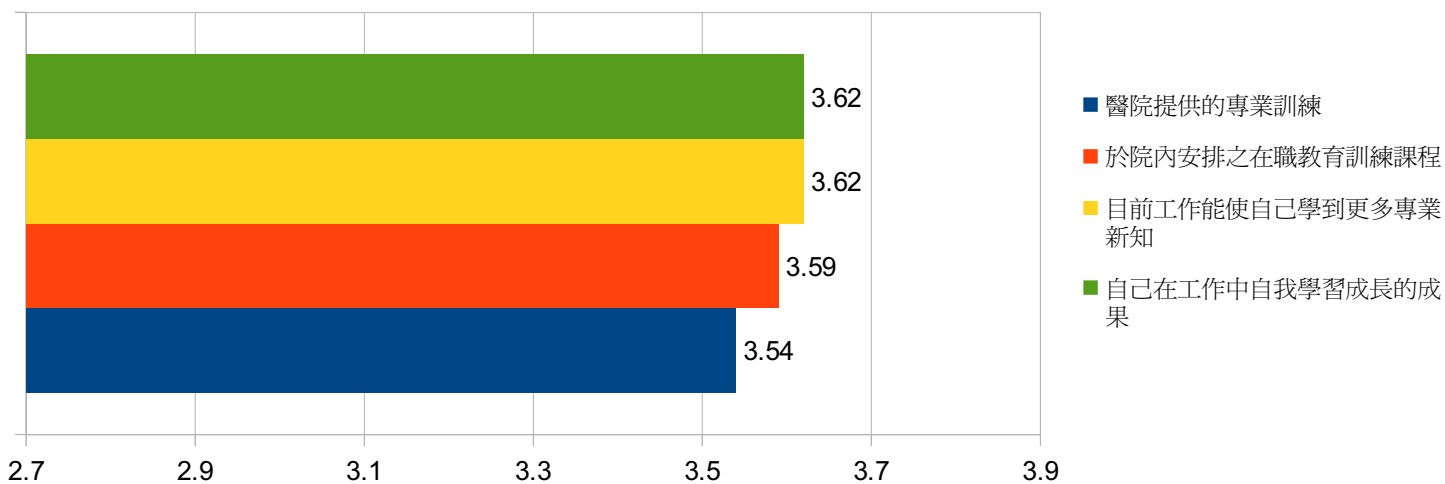
薪資福利



升遷制度

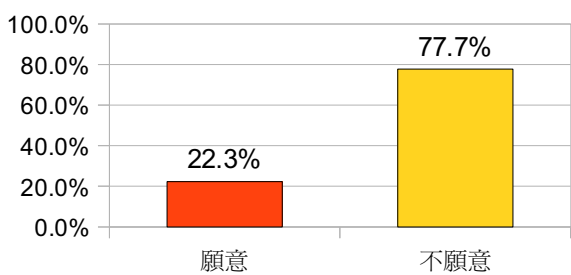


學習成長

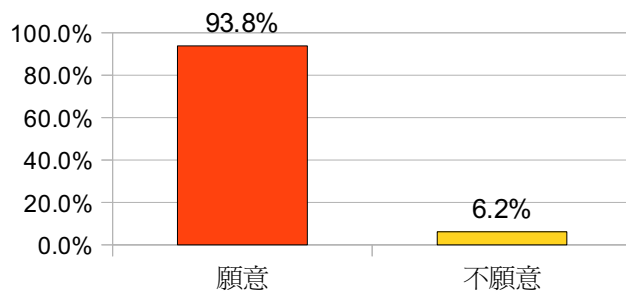


三、留任意願

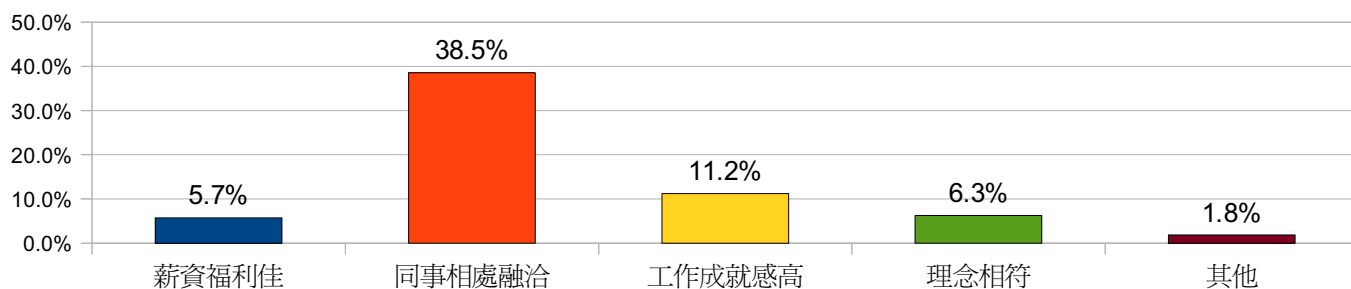
輪調意願



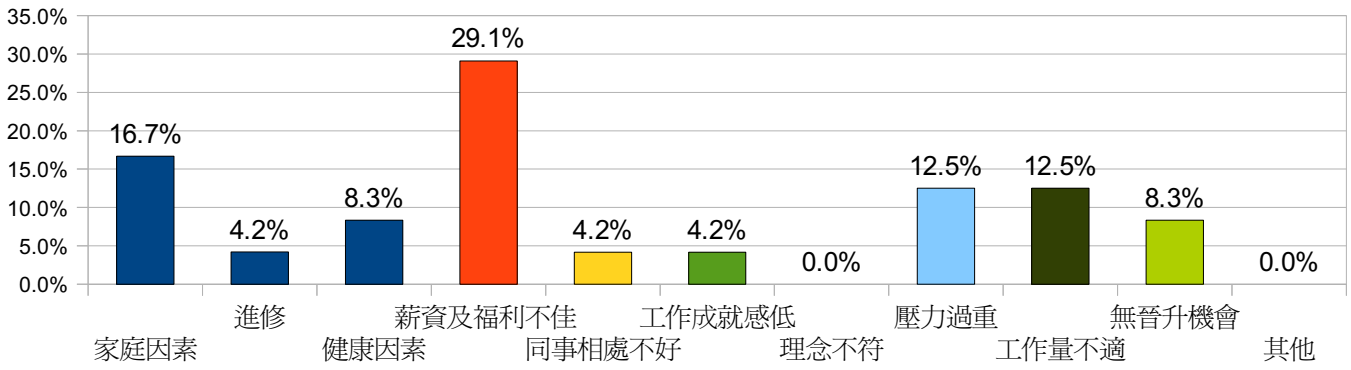
留任意願



願意續留本院原因

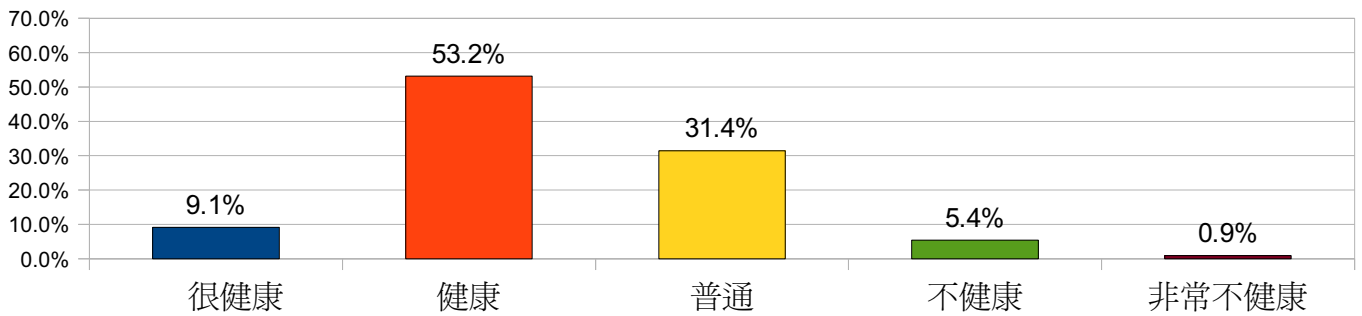


不續留本院原因

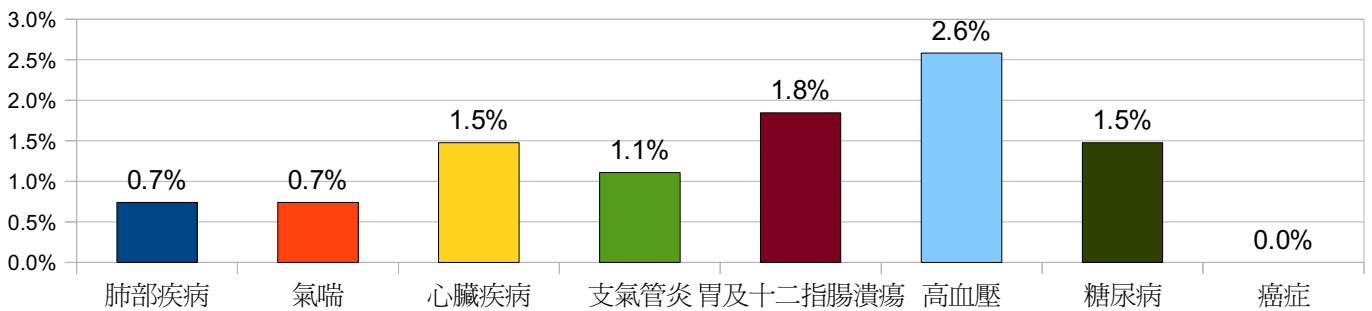


四、健康行為

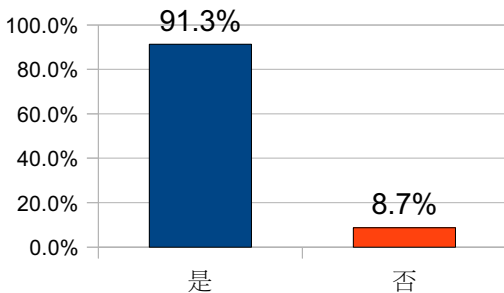
自覺健康情形



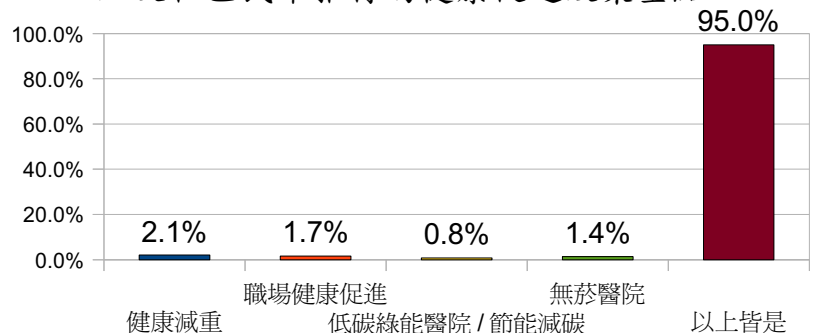
去年一年間經醫師診斷或治療的慢性疾病



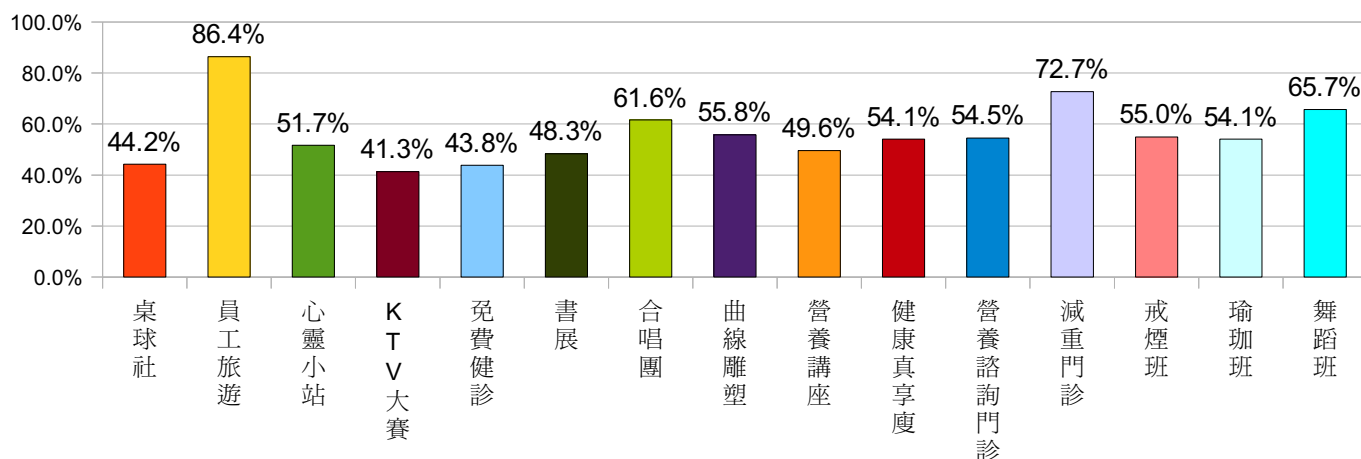
您是否曉得本院已通過健康促進醫院認證



您知道以下何者為本院今年度針對員工(家屬)病人及社區民眾推行的健康促進政策重點

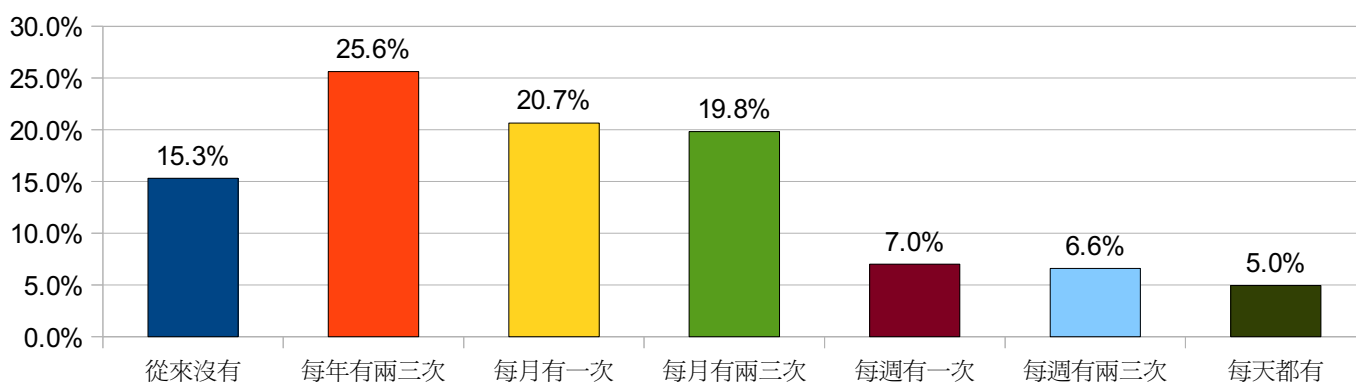


您知道醫院提供那些增進員工身心健康之社團或相關活動

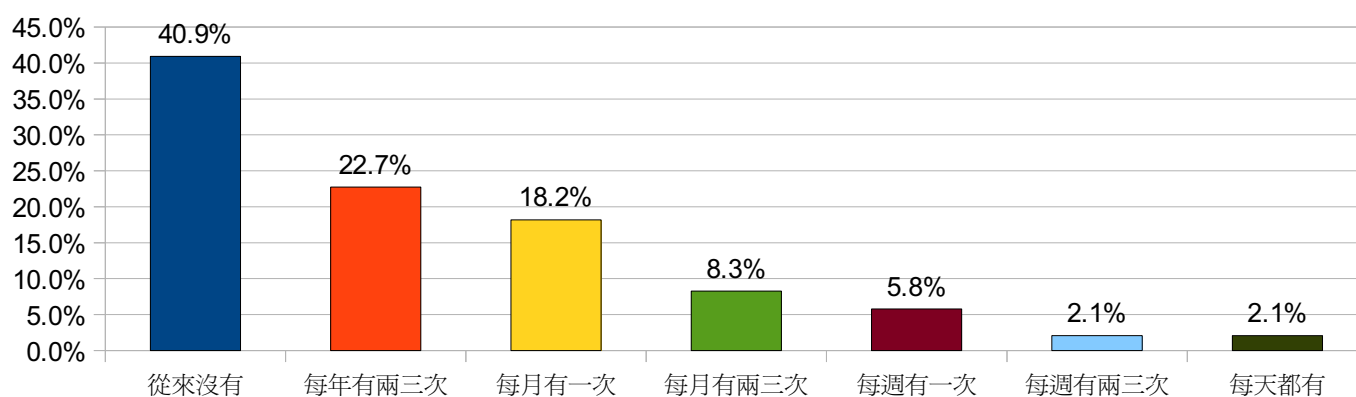


五、員工疲乏指數調查

我對目前的醫療工作感到心力交瘁



從事目前的工作後，我對人變得麻木冷酷



六、高齡友善醫院認知

請問您是否知道或聽過本院有在推動「高齡友善醫院」？

