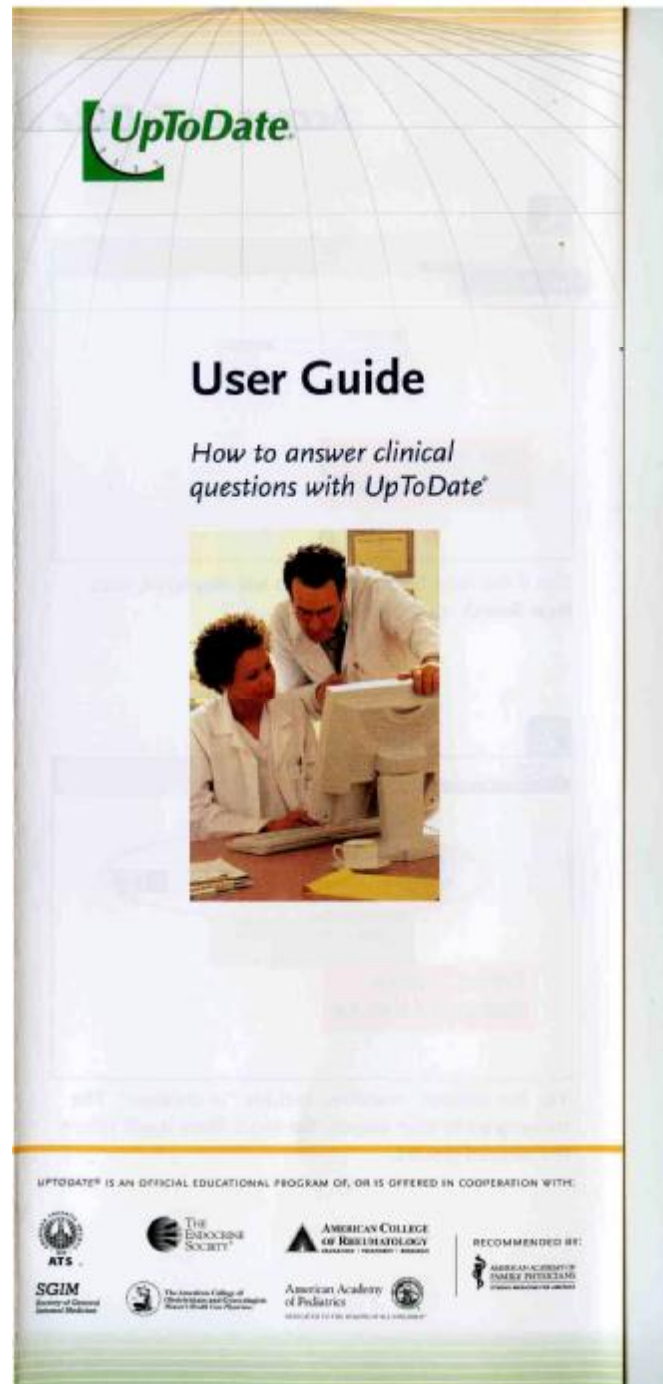
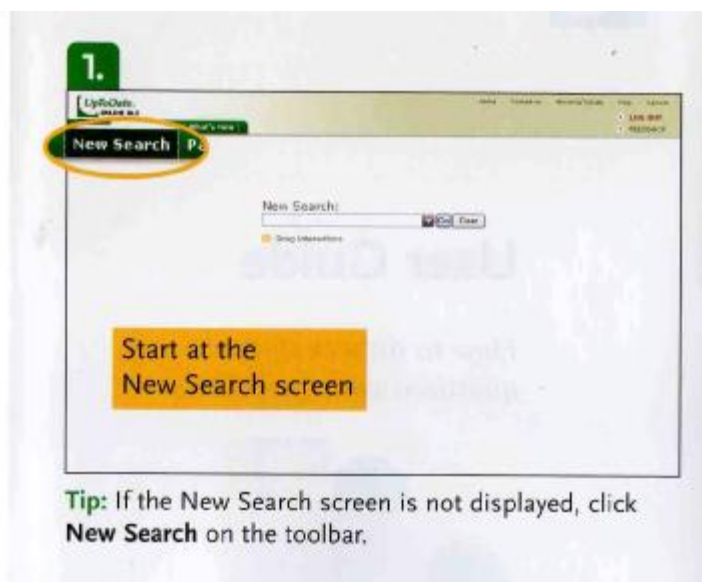


附件二 UPTODATE 資料庫使用手冊

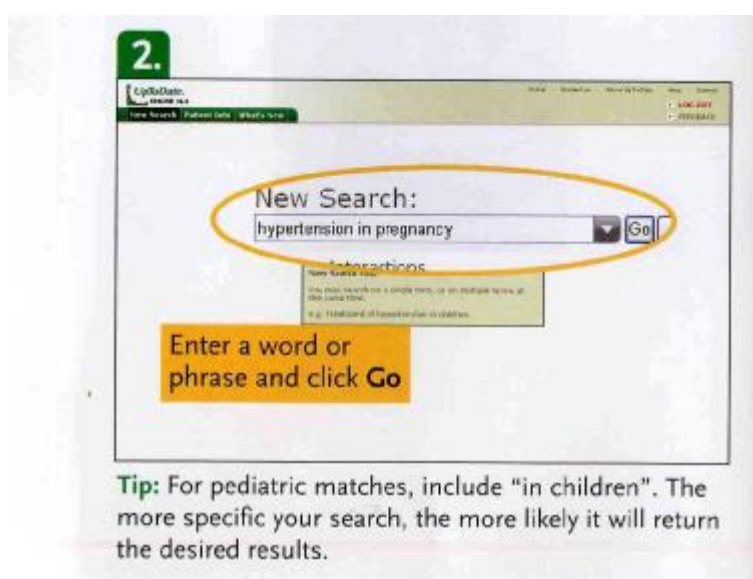
封面



步驟一：開啓一個新的搜尋引擎




步驟二：輸入要查詢的關鍵字



步驟三：搜尋檢索的畫面呈現

3.



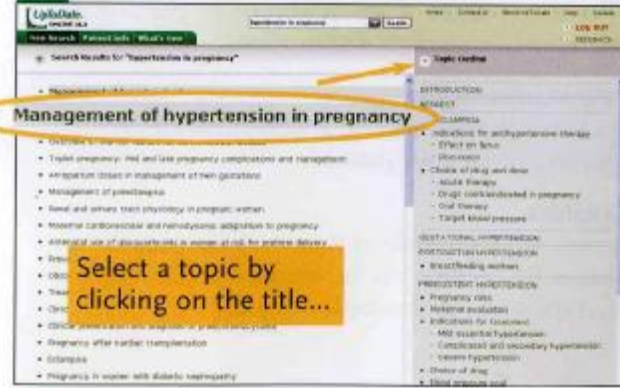
Search Results for "Hypertension in pregnancy"

- **Management of hypertension in pregnancy**
- Gestational hypertension
- Clinical features, diagnosis, and long-term outcomes
- Management
- Renal and urinary tract physiology in pregnant women
- Maternal cardiovascular and hemodynamic adaptation to pregnancy
- Antenatal
- Postnatal
- Obstetric
- Clinical presentation and diagnosis of pheochromocytoma
- Pregnancy after cardiac transplantation
- Stillbirths
- Pregnancy in women with diabetic nephropathy

Tip: The most relevant matches are listed first.

步驟四：選擇需要主題

4.



Search Results for "Hypertension in pregnancy"

- **Management of hypertension in pregnancy**
- Gestational hypertension
- Clinical features, diagnosis, and long-term outcomes
- Management
- Renal and urinary tract physiology in pregnant women
- Maternal cardiovascular and hemodynamic adaptation to pregnancy
- Antenatal
- Postnatal
- Obstetric
- Clinical presentation and diagnosis of pheochromocytoma
- Pregnancy after cardiac transplantation
- Stillbirths
- Pregnancy in women with diabetic nephropathy

Tip: Position the mouse arrow over the title to see a preview of the topic outline on the right.

步驟五：或是選擇其他最適切的資料

5.

Search Results for "hypertension in pregnancy"

Management of hypertension in pregnancy

- Gestational hypertension
- Clinical features, diagnosis, and long-term prognosis of preeclampsia
- Overview of the risk factors for cardiovascular disease
- Treating preeclampsia: Maternal and fetal emergency complications and management
- Obstetrical issues in management of twin gestations
- Management of preeclampsia
- Risk and safety from statins in pregnant women
- NSAIDs
- ACE inhibitors
- Calcium channel blockers
- Thiazide diuretics
- Osmotic diuretics
- Clinical presentation and diagnosis of pheochromocytoma
- Pregnancy after cardiac transplantation
- Biotinemia
- Emergency in women with diabetic nephropathy

Topic Outline

- INTRODUCTION
- SUMMARY
- PRECLAMPSE
 - Indications for antihypertensive therapy
 - Effect on fetus
- DISCUSSION
 - Choice of drug and dose
 - Atrial fibrillation
 - Drug contraindications in pregnancy
 - Drug therapy
 - Target blood pressure
- CLINICAL HYDROTICUS
- PREEXISTENT HYPERTENSION
 - Pregnancy
 - Maternal
 - Fetal
 - Mid-trimester
 - Complicated and secondary hypertension
 - Severe hypertension
 - Choice of drug
 - Blood pressure goal
- POSTPARTUM HYPERTENSION
 - Breastfeeding mothers
- PREEXISTENT HYPERTENSION
 - Pregnancy risks
 - Maternal evaluation
 - Complicated and secondary hypertension
 - Severe hypertension
 - Choice of drug
 - Blood pressure goal

Tip: This link will take you directly to that section of the topic. The outline also includes links for any associated graphics and related topics.

步驟六：可以利用上方的搜尋引擎搜尋相關主題

6.

Management of hypertension in pregnancy

Walter J. Gilbert, MD, MPH

Section Editors: George L. Saba, MD; George L. Saba, MD

Last literature review version: 10.3; May 2010 | 1841 topic last updated: May 27, 2010 (New)

DISCUSSION — There are four major hypertensive disorders in pregnancy (1,2):

- Preeclampsia/eclampsia
- Chronic hypertension
- Preeclampsia superimposed upon underlying hypertension
- Gestational hypertension

The diagnosis of a hypertensive disorder in a pregnant woman depends, in part, upon the gestational age at which the hypertension develops. The syndrome of new-onset hypertension and proteinuria after 20 weeks of gestation is referred to as gestational hypertension (superimposed preeclampsia). Chronic hypertension is defined as a systolic blood pressure and diastolic blood pressure of 160/110 mm Hg or higher on two occasions at least 4 weeks apart, or persistently higher than 12 weeks of gestation. Over time, some patients with gestational hypertension will develop preeclampsia and be considered preeclamptic, while others will be diagnosed with chronic hypertension because of persistent blood pressure elevation postpartum.

The treatment of hypertension in pregnant women will be reviewed here. The pathogenesis, clinical features, diagnosis, obstetrical management, and prevention of preeclampsia are discussed separately. (See "Pathogenesis of preeclampsia" and see "Clinical features, diagnosis, and long-term prognosis of preeclampsia.")

Tip: Use the topic outline or Find function to locate specific text or sections of the topic.

Consider an individual subscription to *UpToDate*

- **Enjoy access from anywhere** via the Web, desktop, or PDA.
- **Earn effortless CME**, including *AMA PRA Category 1 Credit*[™], AAFP Prescribed credit, AAP credit, AOA credit, AAPA equivalent credit, ACEP credit, and AANP contact hours. *UpToDate* automatically keeps track of your credits. Visit www.uptodate.com for more information about CME and educational objectives.
- **Get answers that affect patient care.** In a study at 10 community hospitals,* physicians reported that:
 - 89% of *UpToDate* searches improved patient care
 - 93% of *UpToDate* searches answered their question

UpToDate specialties:

Adult Primary Care and Internal Medicine	Infectious Diseases
Cardiovascular Medicine	Nephrology and Hypertension
Endocrinology and Diabetes	Obstetrics, Gynecology, and Women's Health
Family Medicine	Oncology
Gastroenterology and Hepatology	Pediatrics
Hematology	Pulmonary, Critical Care, and Sleep Medicine
	Rheumatology

Subscribe to *UpToDate* — RISK FREE

If you are not completely satisfied, simply return all materials within 60 days for a full refund.

Tel: 1-800-998-6374 (US/Canada)

Tel: +1-781-392-2000 (All other countries)

www.uptodate.com

* Community hospital user study, 2005.

AMA PRA Category 1 Credit[™] is a trademark of the American Medical Association. All rights reserved.

Additional *UpToDate* features

▶ **What's New**

Search "What's new" for a summary of important new findings by specialty since the last release.

▶ **Feedback**


Help improve *UpToDate* by submitting your questions and comments to our editors.

▶ **Drug Database**

Review dosing, adverse reactions, and other drug information by selecting a drug link from a topic or searching on a drug name.

▶ **Drug Interactions Program (online only)**

Access and analyze drug interactions with the drug interactions program located on the search screen.

In partnership with  www.lexi.com.*

▶ **Email this Topic (online only)**

Share topics and guest passes with colleagues and patients by using the "Email" link.

▶ **Medline Abstracts**

View the abstract of any reference by clicking on the reference number within topics.

▶ **Patient Information**

Click on "Patient Info" to access handouts written specifically for your patients.

▶ **Graphics**

Access the thousands of figures, tables, and other images by clicking on the image links throughout the topics and in the topic outlines.

*  is a registered trademark of Lexi-Comp, Inc. 2008



95 Sawyer Road
Waltham, MA 02453-3471 USA
Tel: 1-800-998-6374 (US/Canada) • +1-781-392-2000
Fax: 1-781-642-8840 • www.uptodate.com

© UpToDate, Inc. 10/08
SKU#000004